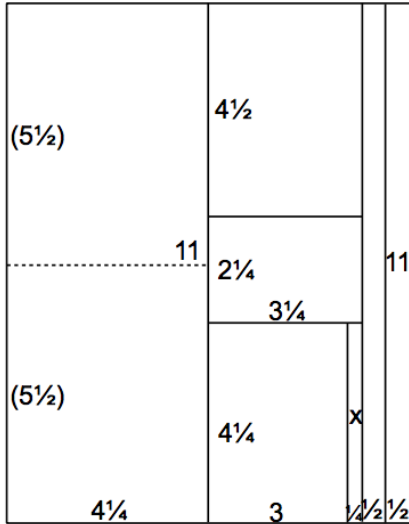
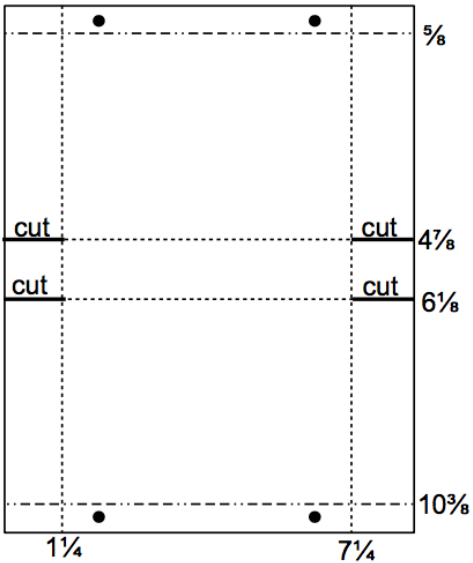


8½x11 Wine Plain



5. Trim one 8.5x11 Wine Plain vertically at 8, 7.5 and 4.25". Score and fold the 4.25x11 horizontally at 5.5". Trim the 3.25x11 horizontally at 6.75 and 4.5". Cut the 3.25x4.25 vertically at 3". Run the .5x11 strips through your fingers to create curved purse handles.

8½x11 Dk. Green Plain and Pebble Plain



6. Score one 8.5x11 Dk. Green Plain and one Pebble Plain vertically at 1.25 and 7.25". Score horizontally at 5/8, 4-7/8, 6-1/8 and 10-3/8". Cut along the solid lines as indicated in the diagram. Pierce two holes on each end to attach the .5x11 Wine paper strips with brads to form purse handles. Fold along score lines to form into a three-sided box and adhere tabs and side walls.



Click [HERE](#) for more detailed assembly information, or visit clubscrap.com/0217alcm

