



Assembly Line Scrapbooking

October 2007 *Greetings to Go* Great Outdoors

Materials:

- "Great Outdoors" Greetings To Go
- Wood Mounted "Grass and Tree Line" Stamp Set
- Wood Mounted "Enjoy" Stamp
- Wood Mounted "Got Adventure?" Stamp
- Club Stamp Wood Mounted "Beautiful Birch" Stamp
- "Great Outdoors" Embellishment Pack
- Club Stamp Unmounted Rubber
- "Great Outdoors" Green Text-Weight Plain paper
- Black Plain Cardstock
- (3) 1x2 Pine Scraps
- ¼" Antique Brass and Copper Eyelets

Tools:

- | | |
|--|--|
| <input type="checkbox"/> Paper Trimmer | <input type="checkbox"/> Watercolor Crayons, Pencils or Paints |
| <input type="checkbox"/> Adhesive and Tape | <input type="checkbox"/> Waterbrush |
| <input type="checkbox"/> Black, Brown, Red and Green Ink | <input type="checkbox"/> Bone Folder |
| <input type="checkbox"/> Gold Embossing Powder | <input type="checkbox"/> Foam Mounting Tape |
| <input type="checkbox"/> Heat Tool | <input type="checkbox"/> Eyelet Setter |
| <input type="checkbox"/> Ruler | <input type="checkbox"/> Stapler |
| <input type="checkbox"/> Paper Piercer and Corkboard | <input type="checkbox"/> Craft Knife and Cutting Mat |

Fraction to Decimal Conversions

1/8" = .125" 1/2" = .5" 7/8" = .875"

1/4" = .25" 5/8" = .625"

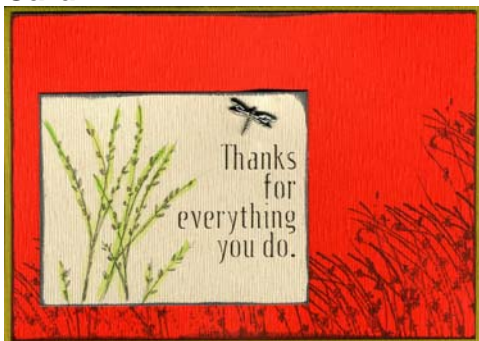
3/8" = .375" 3/4" = .75"



Fold all pre-scored cards in half on the score line. Reinforce all folds with a bone folder.

Set A: 4-1/2" x 6-1/4" Light Green Cards with Red Panels

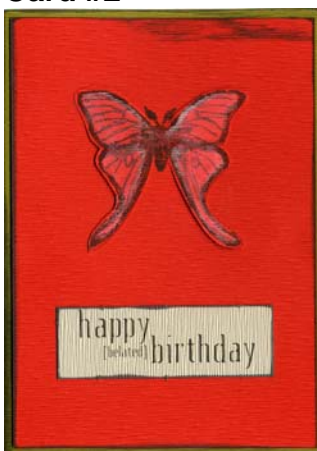
Card #1



- Light Green Card with Red Panel
- Mushroom Die Cut: "Thanks for everything..."
- WM Grass Stamp
- Black Ink
- Dragonfly Brad
- Light Green Watercolors
- Waterbrush

1. Ink edges of card, panel and die cut with black ink.
2. Add light green watercolors to the die cut image. Insert a dragonfly brad above the verse on the die cut.
3. Stamp the lower half of the panel repeatedly with the grass image and black ink. Layer the die cut onto the panel and the panel onto the card.

Card #2



- Light Green Card with Red Panel
- Mushroom Die Cut: "Happy Belated Birthday"
- Craft Knife and Cutting Mat
- Watercolors
- Waterbrush
- Black Ink
- Club Stamp UM Rubber
- Black Ink
- Foam Mounting Tape

1. Ink the edges of the panel, card and die cut with black ink.
2. Stamp the moth with black ink onto the Red panel. Color the moth with watercolors. Cut along the edges of the wings with a craft knife, leaving the body in tact. Attach foam tape behind the wings to add dimension.
3. Layer the die cut onto the lower half of the panel and attach to the card.



Card #3



- Light Green Card with Red Panel
 - Club Stamp UM Rubber
 - (3) Antique Brass Eyelets and Eyelet Setter
 - Mushroom Die Cut: "Just a Little Note"
 - Brown and Black Ink
1. Stamp the lower half of the Red panel with the line of trees from the UM Rubber and black ink.
 2. Fold the top right corner of the panel down at an angle. Bring the tip of the angle back up to the edge of the fold. Secure with adhesive and then decorate with a set of three antique brass eyelets.
 3. Ink the edges of the Mushroom die cut and attach to the upper right corner of the card. Layer the Red panel onto the card.

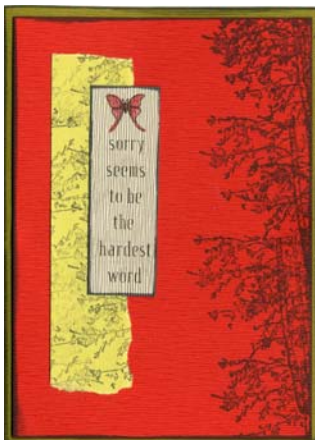
Card #4



- Light Green Card with Red Panel
 - WM Grass Stamp
 - Fish Charm
 - Black and Brown Ink
 - Green Text-Weight Plain
 - "Grass and Tree Line" Stamp Set
 - Club Stamp UM Rubber
 - Tiny Brad
1. Mask an area about two inches from the top and bottom edges of the Red panel. Stamp the grass image repeatedly with brown ink. Sponge brown ink directly to the surface of the unmasked area to darken.
 2. Stamp "Enjoy Everything" three times at an angle onto the center of the panel with black ink. Attach the fish charm with a tiny brad.
 3. Stamp two .25" strips of Green Text-Weight Plain with the WM tree line stamp and black ink. Attach to cover the seam between the masked and unmasked area.
 4. Layer the panel onto the card at an angle; trim the corners that extend beyond the edges of the card



Card #5



- Light Green Card with Red Panel
- Club Stamp UM Rubber
- Club Stamp WM “Beautiful Birch” Stamp
- Mushroom Die Cut: “Sorry seems to be...”
- Green Text-Weight Plain
- Watercolors
- Black Ink

1. Ink the edges of the card, panel, and die cut with black ink.
2. Stamp the right edge of the Red panel with the birch image and black ink. Attach the panel to the card.
3. Tear a narrow strip of Green Text-Weight Plain and stamp lightly with the leaves of the birch image. Attach to the left edge of the card.
4. Color the moth on the Mushroom die cut with red watercolor, and layer next to the Green strip.

Set B:

8-5/8” x 3-5/8” Red Cards with Mushroom Panels

Card #1

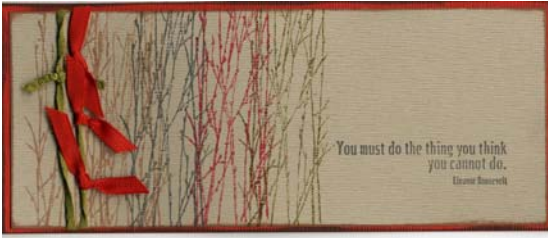


- Red Card with Mushroom Panel
- Red Perforated Squares
- Mushroom Die Cuts: Three Moth Images and “Wanna Go Outside and Play?”
- Brown Ink
- Stapler
- Red Grosgrain Ribbon

1. Apply brown ink directly to the front of the Mushroom panel to highlight texture. Ink edges of Mushroom die cut with brown ink.
2. Trim a length of red grosgrain ribbon and attach to the vertical Mushroom panel with staples. Layer the Mushroom die cut to the bottom of the panel.
3. Trim three moths from the Mushroom cutouts and attach to three Red perforated squares. Staple the squares to the card, as shown. Layer the panel onto the card.



Card #2



- Red Card with Mushroom Panel
- Red Grosgrain Ribbon and Green Fiber
- Black, Brown, Red and Green Ink
- Club Stamp UM Rubber
- WM Tree Line Stamp

1. Stamp the tree line image several times onto the horizontal Mushroom panel with assorted ink.
2. Wrap the green fiber around the left edge of the panel and tie several red bows onto the fiber.
3. Stamp the "You must do the thing..." quote onto the right side of the panel; layer the panel onto the card.

Card #3



- Red Card with Mushroom Panel
- (2) ¼" Copper Eyelets
- Red Grosgrain Ribbon
- Club Stamp UM Rubber
- WM "Enjoy" Greeting Stamp
- Black and Red Ink

1. Stamp the trees repeatedly across the bottom of the horizontal Mushroom panel with red ink. (We used red embossing powder to add texture.)
2. Stamp "Enjoy" onto the upper half of the panel with black ink. Set a copper eyelet on each side of the word.
3. Thread the grosgrain ribbon in and out of the eyelet, and wrap the ends around to the back of the panel. Layer the panel onto the card.

Card #4



- Red Card with Mushroom Panel
- Black Cardstock
- WM "Tree Line" Stamp
- WM "Got Adventure?" Stamp
- Black Ink
- Gold Embossing Powder
- Red Perforated Squares

1. Stamp the tree line image onto six Red perforated squares; emboss with gold powder and tear out the individual squares.
2. Trim six 1.25" Black squares; layer the Red squares onto the black, and attach to the horizontal Mushroom panel.
3. Stamp "Got Adventure?" onto the lower right corner of the panel, ink edges with black ink, and attach to the Red card.



Card #5



- Red Card with Mushroom Panel
- Mushroom Die Cut: "Bravo"
- Black Cardstock
- Red Grosgrain Ribbon
- (2) Tiny Brads
- Watercolors
- Black Ink

1. Ink Mushroom die cut lightly with black ink. Matte with a 1.25x3.25" piece of black plain. Enhance the tree with watercolors.
2. Attach a 5" length of red grosgrain ribbon to the vertical Mushroom panel with two tiny brads.
3. Layer the matted die cut on top of the ribbon and attach the panel to the card.

Set C: 5" x 7" Dark Green Cards with Light Green Panels

Card #1

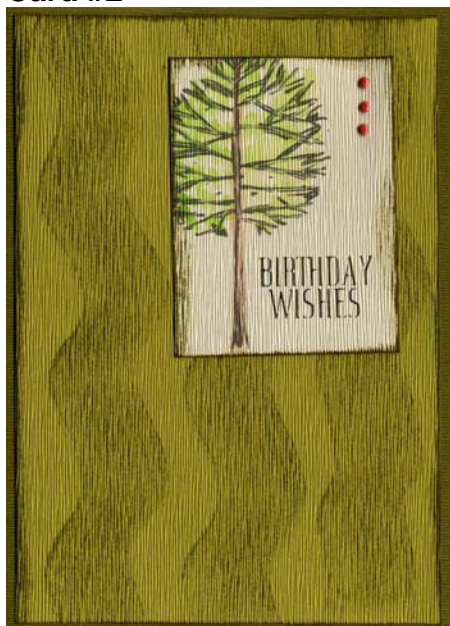


- Dark Green Card with Light Green Panel
- Mushroom Die Cuts: "I Had So Much Fun" and "With Sincerest Appreciation"
- Club Stamp UM Rubber
- (3) 1x2 Pine Scraps
- Watercolors
- (3) Copper Brads
- Green Ink

1. Tear the bottom edge of the horizontal Light Green panel and attach to the center of the Dark Green card.
2. Ink the edges of the Mushroom die cuts with green ink and layer onto the panel, as shown. Add watercolors to the moth.
3. Stamp the moth onto the set of three pine scraps with green ink; add watercolors. Punch a hole at the top of each wooden piece and set a copper eyelet in each hole; layer onto the panel.



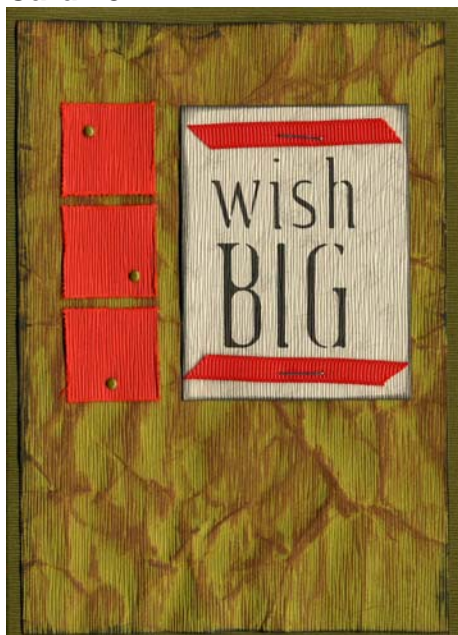
Card #2



- Dark Green Card with Light Green Panel
- Mushroom Die Cuts: "Birthday Wishes"
- Green Ink
- (3) Tiny Brads
- Watercolors

1. Ink the edges of the panel and die cut with green ink. Apply waves of green ink directly from the pad onto the panel in vertical strips.
2. Add watercolors to the Mushroom die cut, insert three tiny brads into the upper right corner, and attach to the Light Green panel. Layer the panel onto the card.

Card #3

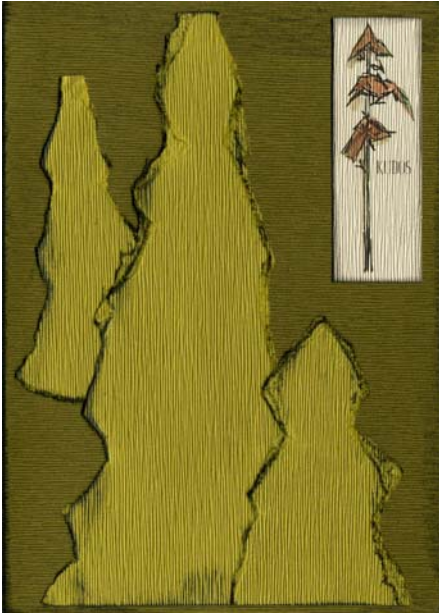


- Dark Green Card with Light Green Panel
- Red Perforated Squares
- Mushroom Die Cut: "Wish Big"
- Red Grosgrain Ribbon
- Stapler
- (3) Tiny Brads
- Black and Brown Ink

1. Crumple the Light Green panel into a ball; open and flatten. Apply brown ink directly from the pad onto the raised surfaces.
2. Tear out and attach three Red perforated squares onto the left side of the vertical panel.
3. Ink the edges of the Mushroom die cut with black ink; attach two 2.5" lengths of grosgrain ribbon to the top and bottom with a stapler. Layer onto the panel.
4. Attach the panel to the card.

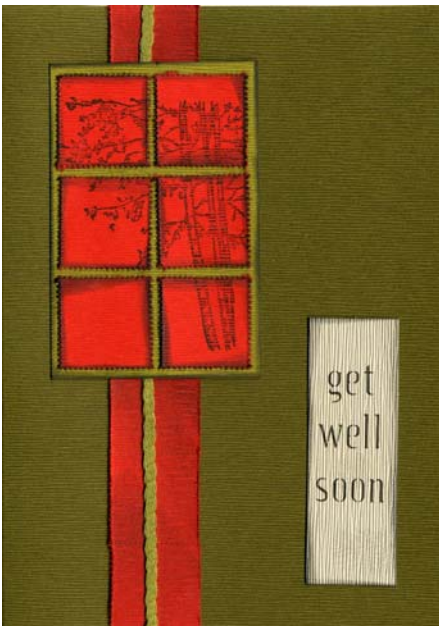


Card #4



- Dark Green Card with Light Green Panel
 - Mushroom Die Cut: "Kudos"
 - Black Ink
 - Watercolors
1. Tear the Light Green panel into three triangular shapes that represent trees. Ink edges with black ink, and layer the trees onto the card.
 2. Ink edges of Mushroom die cut with black ink. Add watercolors to the tree. Attach to the upper right corner of the card.

Card #5



- Dark Green Card with Light Green Panel
 - Red Perforated Squares
 - Mushroom Die Cut: "Get Well Soon"
 - WM "Beautiful Birch" Stamp
 - Green Fiber
 - Black Ink
1. Ink edges of Mushroom die cut with black ink and attach to the lower right corner of the vertical card.
 2. Tear a strip of Red perforated squares, ink directly with black and trim to fit the height of the card; attach. Top with a length of green fiber.
 3. Stamp the birch tree image onto a set of six perforated squares with black ink; tear out and ink the edges of the individual squares. Layer onto a portion of the Light Green panel and trim excess. Attach to the upper left corner of the card.

