

Friendship ALSB Workshop

Individual Class Kits:

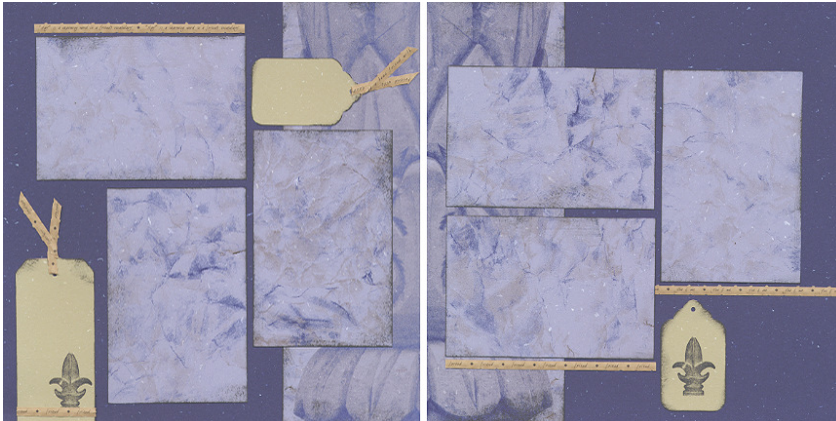
- (2) 12x12 Dark Blue
- (2) 12x12 Light Blue Mirror Print
- (2) 12x12 Light Blue Four-Tile Print
- (2) 12x12 Light Brown Tile Print
- 12x12 Medium Blue Friendship Quote Print
- 8.5x11 Light Blue Plain
- 8.5x11 Dark Brown Embossed Print
- 8.5x11 Dark Blue Plain
- Die Cut Tags

Shared Supplies:

- Black Ink
- Wood Mounted Friendship Junior Stamp
- Friendship Twist Ties

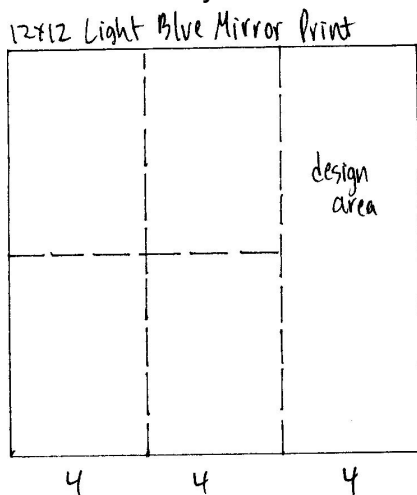
Layout #1 and #2

Technique: 12x12 Mattes and Borders

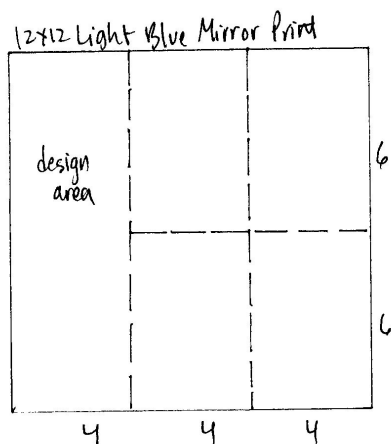


- (2) 12x12 Dark Blue Plain
- (2) 12x12 Light Blue Mirror Print
- Brown Die Cut Tags
- Wood Mounted Friendship Finial Stamp
- Black Ink
- Twist Ties

1. Place the 12x12 Mirror Print with the finial design on the right edge into the trimmer and cut at 8 and 4." Rotate the two plain 4x12 strips horizontally and cut at 6" to make four 4x6 photo mattes.



2. Place the 12x12 Mirror Print with the finial design on the left edge into the trimmer and cut at 8 and 4." Select the two 4x12 plain strips and cut horizontally at 6" to four additional 4x6 mattes.



3. Apply black ink to the edges of all Light Blue Print mattes and border strips.
4. Attach the 4x12 Light Blue finial print (left side of the finial) flush to the right edge of a 12x12 Dark Blue Plain.
5. Attach two vertical and one horizontal 4x6 Light Blue Print photo mattes.
6. Top two Brown die cut tags with twist ties. Stamp the lower right corner of a large tag with the WM Finial and black ink. Attach tags to the page.
7. Place the 4x12 Light Blue finial print (right side of finial) flush to the left edge of the remaining 12x12 Dark Blue Plain.
8. Layer one vertical and two horizontal 4x6 Light Blue Print photo mattes to the layout. Place a twist tie beneath the two bottom mattes.
9. Stamp a Brown die cut tag with the WM Finial, ink edges, and attach to the bottom of the layout. Accent with additional twist ties, if desired.

Layout #3 and #4

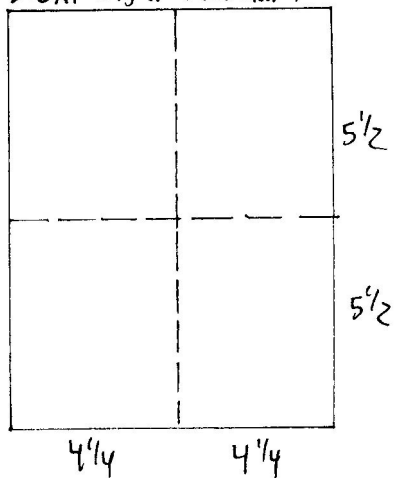
Technique: Border and Mattes; Mathematic Matting



- (2) 12x12 Light Blue Embossed 4-Tile Print
- 12x12 Medium Blue Friend Print
- 8.5x11 Light Blue Plain
- Die Cut Tags
- WM Finial Stamp
- Black Ink

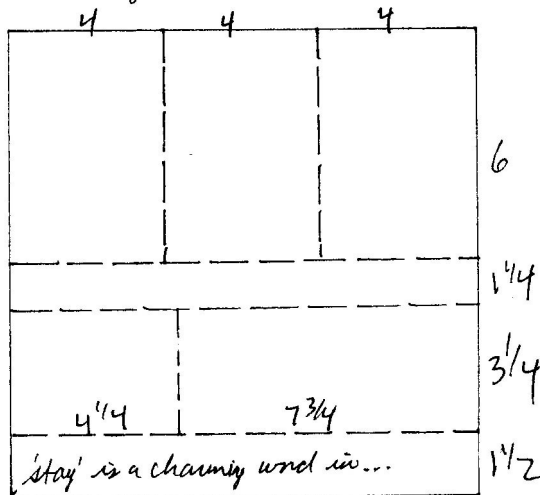
1. Trim the 8.5x11 Light Blue Plain horizontally at 5.5." Stack and rotate the two pieces and trim horizontally at 4.25."

8 1/2 x 11 Light Blue Plain



- Place the 12x12 Medium Blue Friend print into the trimmer with the long printed quote running vertically along the right edge of the page. Cut at 10.5, 7.25, and 6." Place the 6x12 piece horizontally into the trimmer and cut at 8 and 4. Cut the 3.25x12 piece horizontally at 4.25, keeping printed words on the left side as you trim.

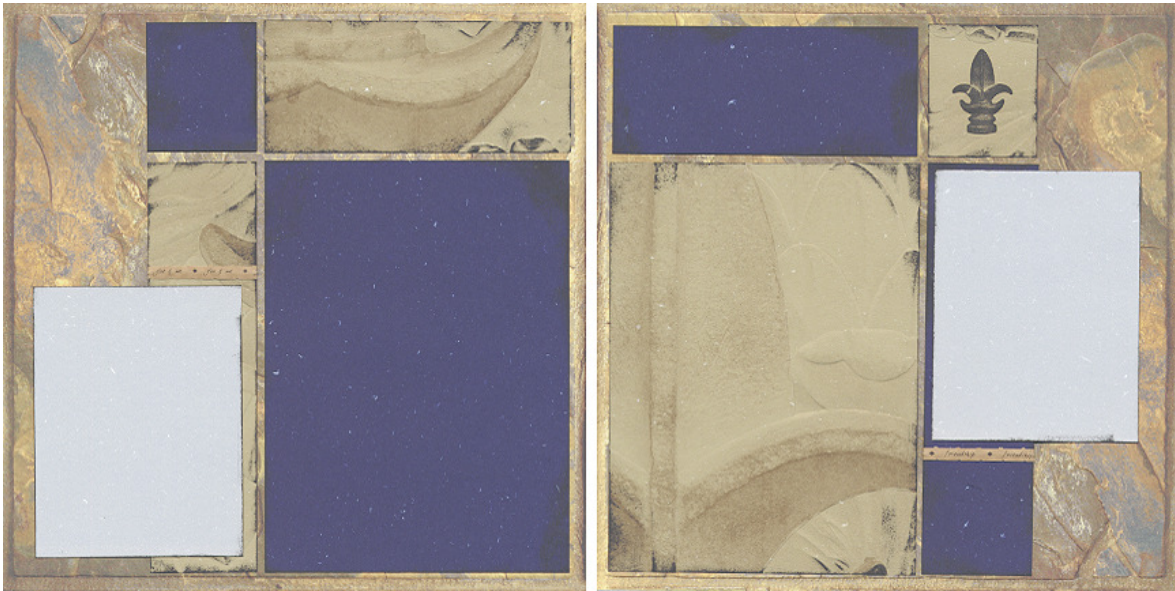
12x12 Light Blue Print



- Ink edges of all borders and photo mattes with black ink.
- Layer the 7.75x3.25 Friend Print vertically into the lower right corner of the 12x12 4-Tile Print. Place the 1.5x12 Friend Print horizontally across the bottom of the page, about .5" from the edge.
- Layer two horizontal 4.25x5.5 Light Blue Plain mattes onto the page,
- Stamp the lower left corner of a large Brown die cut tag with the finial image. Attach to the top of the layout.
- Affix the 1.25x12 Friend Print horizontally onto the remaining 12x12 4-Tile Print, about 2" from the top edge. Place the 4.25x3.25 Friend Print in the upper right corner of the page, centered over the strip. Attach three small Brown die cuts tags onto the strip, to the left of the quote.
- Place one vertical and two printed horizontal 4x6 Light Blue Print mattes onto the layout to finish.

Layout #5 and #6

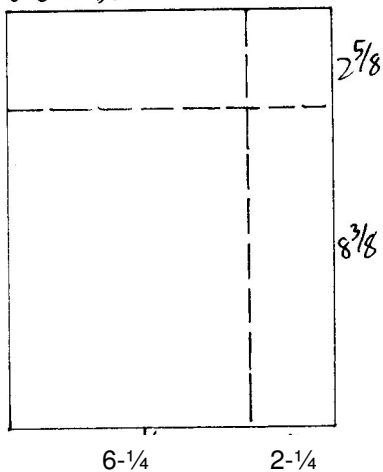
Technique: Cross-Matched Color Block; Mathematic Matting



- (2) 12x12 Embossed Color Tile Print
- 8.5x11 Finial Embossed Print
- 8.5x11 Dark Blue Plain
- (2) 4.25x5.5 Light Blue Photo Mattes (from Layout #3 and #4)
- WM Finial Stamp
- Black Ink
- Twist Ties

1. Place the 8.5x11 Dark Blue Plain vertically into the trimmer and cut at 6.25." Rotate both trimmed pieces horizontally and trim at 8-3/8."

8 1/2 x 11 Dark Blue Plain



2. Place the 8.5x11 Finial Embossed print vertically into the trimmer and cut at 6.25." Rotate both trimmed pieces horizontally and trim at 8-3/8." Ink edges of all four pieces with black ink to highlight raised areas.
3. Layer the 6.25x8-3/8 Dark Blue piece vertically into the lower right corner of the 12x12 Color Tile Print. Fit the 2.25x8-3/8" Finial Embossed piece vertically on the left.
4. Place the 2-5/8x6.25 Finial Embossed strip horizontally in the top right corner of the page, and the 2-5/8x2.25 Dark Blue piece vertically to the left of the strip. Space all four pieces evenly.
5. Layer a 4.25x5.5 Light Blue Plain photo matte vertically into the left edge of the page. Finish with a twist tie.
6. Place the 6.25x8-3/8 Finial Embossed piece vertically into the lower left corner of the 12x12 Color Tile Print, and the 2.25x8-3/8 Dark Blue strip vertically to the right.
7. Attach the 2-5/8x6.25 Dark Blue strip horizontally in the top left corner of the page, and the 2-5/8x2.25 Finial Embossed piece vertically to the right of the strip.
8. Stamp the finial image into the 2-5/8x2.25 square with black ink.
9. Affix a 4.25x5.5 Light Blue photo matte vertically onto the right side of the page. Finish with twist tie embellishments, as desired.