



## Club Scrap® Special Collection

# What a Hoot

### Materials:

- *What a Hoot* Collection
- *What a Hoot* Embellishment Pack
- *What a Hoot* Unmounted Stamps

### Tools and Supplies:

- 12" Paper Trimmer
- Adhesive
- Tape
- 3x14" CS® Grid Ruler
- Scissors
- CS® India Black Ink
- Foam Adhesive
- Waxed Linen Thread
- Watercolor Pencils
- Water Brush

### Measurement Conversions:

.25 =  $\frac{1}{4}$ "

.5 =  $\frac{1}{2}$ "

.75 =  $\frac{3}{4}$ "

LB = Left Base Paper

RB = Right Base Paper

*Preparation: Using a 12" paper trimmer or ruler and craft knife, trim the Ivory and Green Cutaparts into sections as indicated by the artwork.*



Layout 1 & 2



- (2) 12x12 Red Plains (LB & RB)
- 8.5x11 Cream Speckle Plain
- 8.5x11 Ivory Print
- (2) 4.25x6.25 Ivory Photo Mattes
- Owl Transparency
- Green Cutaparts
- Ivory Cutaparts
- Raffia Ribbon
- Unmounted Stamps

1. Trim the 8.5x11 Cream Speckle Plain vertically at 5". Trim the 5x11 horizontally at 10.5, 7 and 3.5". Cut the 3.5x11 horizontally at 10.5, 7 and 3.5".

8 1/2 x 11 Cream Speckle Plain

3 1/2	(11&12)
3 1/2	(11&12)
3 1/2	(11&12)
5 x	3 1/2 x



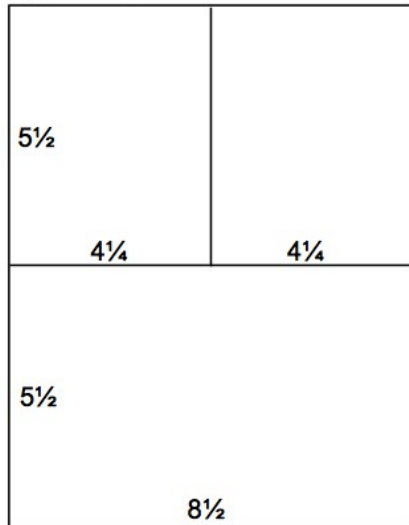
Layout 3 & 4



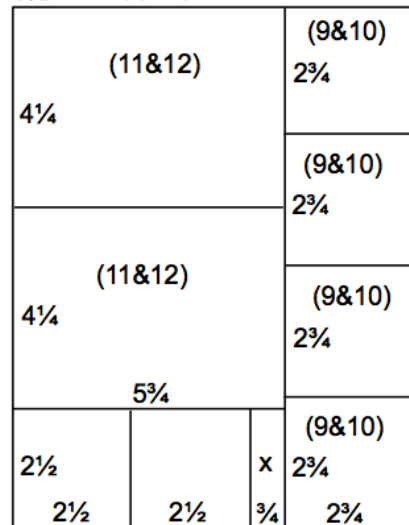
- 12x12 Brown Print (LB)
- 12x12 Blue Plain (RB)
- 8.5x11 Red Print
- 8.5x11 Blue Plain
- 4.25x6.25 Blue Photo Matte
- Green Cutaparts
- Ivory Cutapart
- Red Ribbon
- Large Owl Charm
- Waxed Linen Thread
- Unmounted Stamps

1. Trim the 8.5x11 Red Print horizontally at 5.5". Cut one 5.5x8.5 horizontally at 4.25".
2. Cut the 8.5x11 Blue Plain vertically at 5.75". Trim the 5.75x11 horizontally at 8.5 and 4.25". Cut the 2.5x5.75 horizontally at 5 and 2.5". Trim the 2.75x11 horizontally at 8.25, 5.5 and 2.75".

8 1/2 x 11 Red Print



8 1/2 x 11 Blue Plain





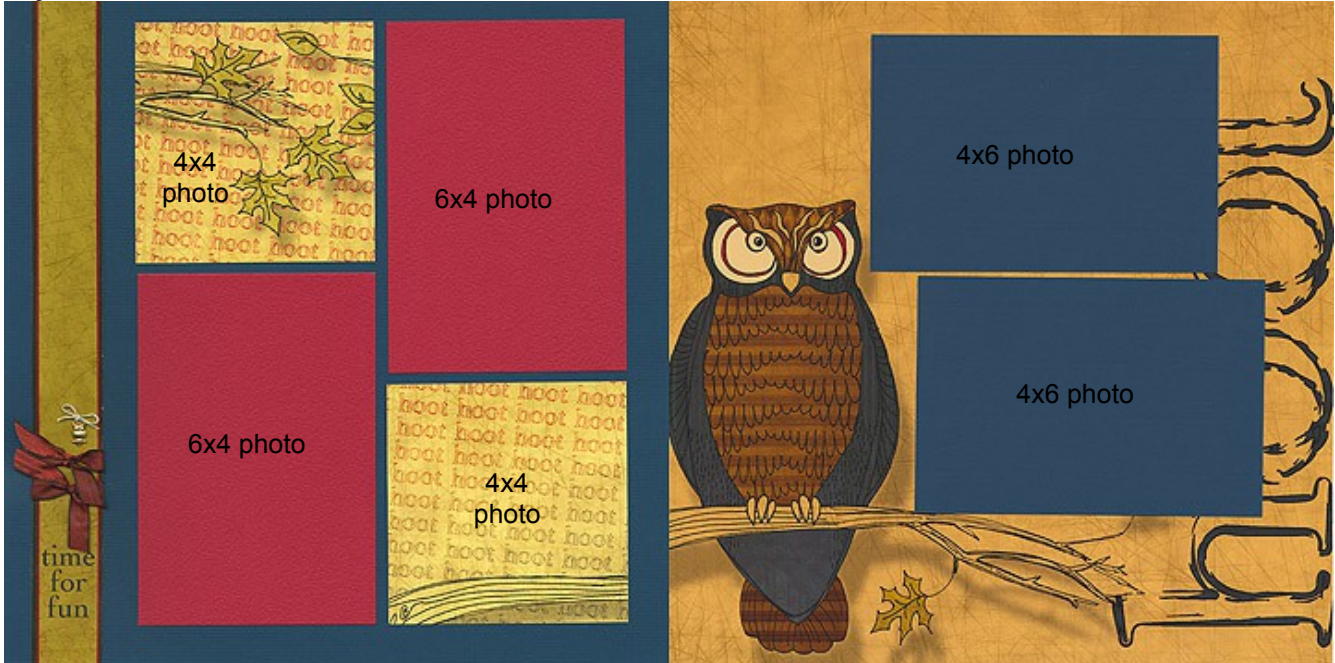
### Layout 5 & 6



- 12x12 Yellow Plain (LB)
  - 12x12 Cream Print (RB)
  - 8.5x11 Red Print
  - 4.25x6.25 Red Photo Matte
  - (2) 4.25x6.25 Green Photo Mattes
  - Ivory Cutaparts
  - Green Cutaparts
  - RicRac Ribbon
  - Small Owl Charm
  - Waxed Linen Thread
  - Unmounted Stamps
1. No cutting needed for this layout.



Layout 7 & 8



- 12x12 Blue Plain (LB)
- 12x12 Yellow Print (RB)
- 8.5x11 Ivory Print
- (2) 4.25x6.25 Red Photo Mattes
- (2) 4.25x6.25 Blue Photo Mattes
- Green Cutapart
- Red Ribbon
- Small Owl Charm
- Waxed Linen Thread

1. Cut the 8.5x11 Ivory Print horizontally at 8.5 and 4.25". Trim each 4.25x8.5 horizontally at 4.25". Cut the 2.5x8.5 horizontally at 7.5, 5 and 2.5".

8½x11 Ivory Print

4¼			
(9&10)		(9&10)	
4¼		4¼	
(9&10)	(9&10)	(9&10)	x
2½	2½	2½	1



Layout 9 & 10



- 12x12 Cream Print (LB)
- 12x12 Yellow Plain (RB)
- (2) 4.25x4.25 Ivory Prints (From 7&8)
- (3) 2.5x2.5 Ivory Prints (From 7&8)
- (4) 2.75x2.75 Blue Plains (From 3&4)
- 4.25x6.25 Ivory Photo Matte
- Ivory Cutaparts
- Green Cutapart
- Cream Grosgrain Ribbon
- Unmounted Stamps

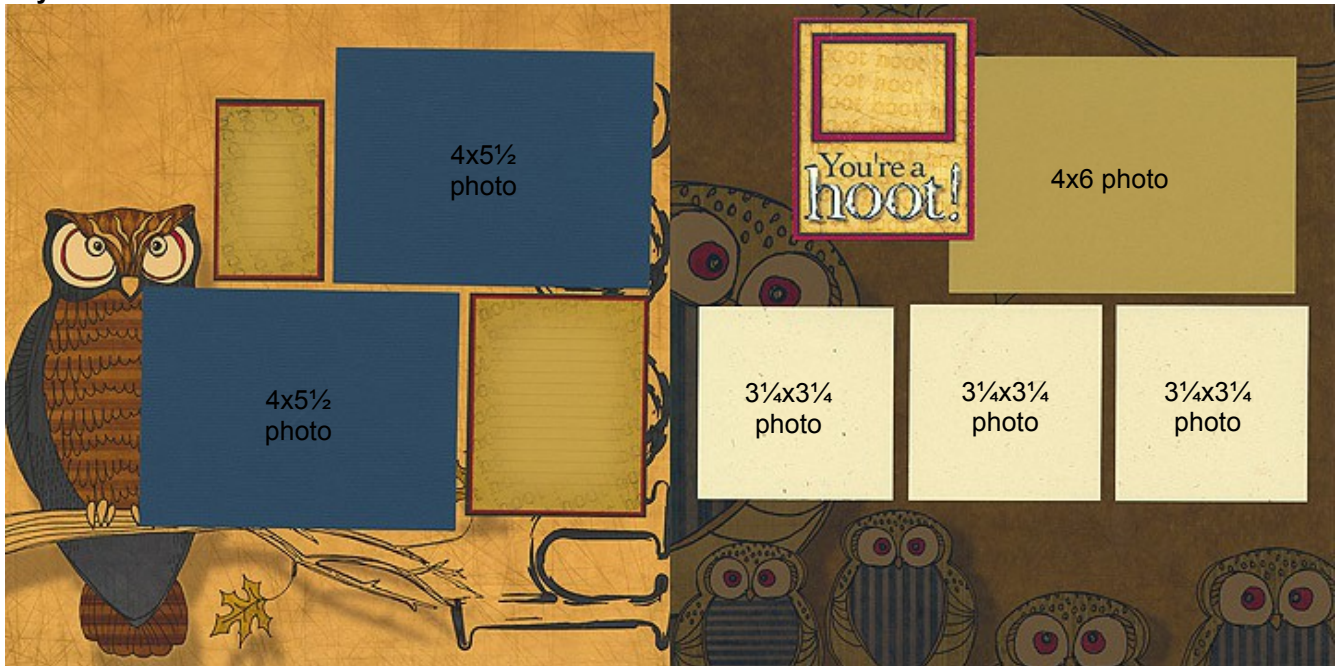


1. No trimming needed for this page. Whoot!





Layout 11 & 12



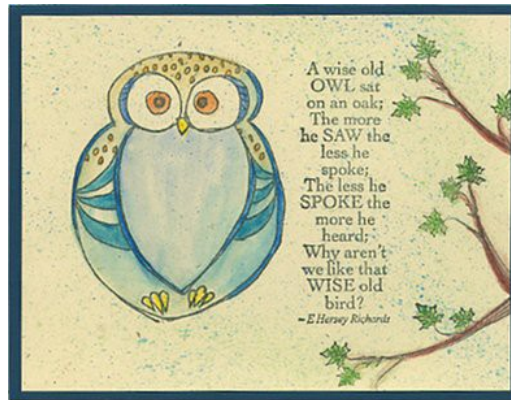
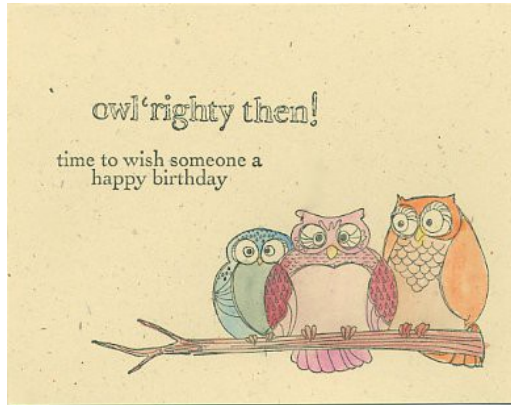
- 12x12 Yellow Print (LB)
- 12x12 Brown Print (RB)
- (3) 3.5x3.5 Cream Speckle Plains (From 1&2)
- (2) 4.25x5.75 Blue Plains (From 3&4)
- 4.25x6.25 Green Photo Matte
- Ivory Cutapart
- Green Cutaparts

1. Wow, no trimming needed! Whoot, whoot!





Cards 1, 2 & 3



- 8.5x11 Blue Plain
- 8.5x11 Speckle Cream Plain
- Unmounted Stamps
- (It would be very cute if you had some googly eyes to add to these cards, wouldn't it?)

1. Trim the 8.5x11 Blue Plain horizontally at 5.5". Score and fold each 5.5x8.5 horizontally at 4.25".
2. Cut the 8.5x11 Cream Speckle Plain horizontally at 10.75 and 5.25". Cut the 5.25x8.5 horizontally at 8 and 4". Score and fold the 5.5x8.5 horizontally at 4.25".

