

Materials

- 10½x12" White Box Base
- 10½x11½" Black Box Lid
- 5⅞x9⅜" White Vertical Divider
- 2⅝x7⅞" White Horizontal Divider
- 6x7½" Lid Liner
- (3) 8½x11" White Card Bases
- (2) 6¾x9" White Card Bases
- (6) 4x5¼" Black Card Mattes
- 6x8 Black Card Matte
- White POPs
- 5¾x7¼" Transparency Film
- (6) White Envelopes
- (12) Clear Envelopes
- (2) Yards 3/8" Black Satin Ribbon Closure

Tools and Supplies

- CS® Neon Dabbers
- CS® Neon Ink Pads
- India Ink Pad
- Acrylic Mounting Block
- Stamp Cleaning Supplies
- Desk Blotter
- Non Stick Craft Sheet
- Neon Doodles UM Stamp Plate
- CS® Bookbinding Glue
- Foam Brush
- CS® Grid Ruler
- Pencil
- Bone Folder
- Scissors
- ScorePal
- Envelope Punch Board
- Protected Work Surface/Scrap Paper

Play Time with Daubers and Ink Pads

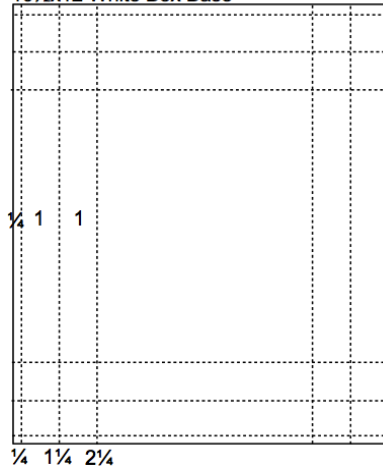
1. When using multiple neon inks, begin with the lightest colors first to avoid inkpad contamination. Always thoroughly clean stamps between colors, especially when going from dark to light.
2. Experiment with dotted patterns, splats, swipes, squiggles, swatches, overlapping colors, etc. The secret: relax and have fun! Your final card panel sizes will be (6) 3½x4¾ and (12) 1⅞x1⅞".

Box and Card Assembly

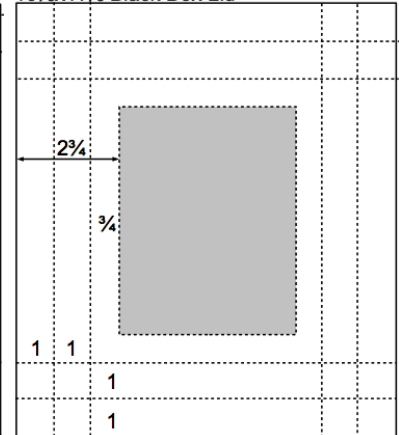
Scoring:

1. Score each White Card Base 8½x11 vertically at 4¼".
2. Score the 6¾x9 White Card Bases horizontally at 2¼ and 6¾".
3. Score the 10½x12" White Box Base ¼, 1¼, and 2¼" from each outside edge.
4. Score the 5⅞x9⅜" White Vertical Divider horizontally at 4¾, 5¾ and 6¾".
5. Score the 2⅝x7⅞" White Horizontal Divider horizontally at 3, 4 and 5".
6. Score the 10½x11½" Black Box Lid 1 and 2" from each outside edge.

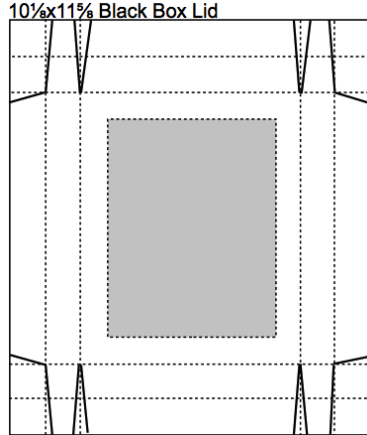
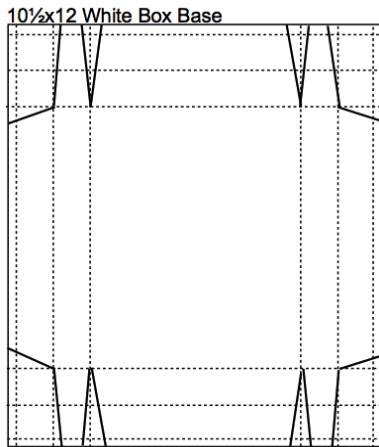
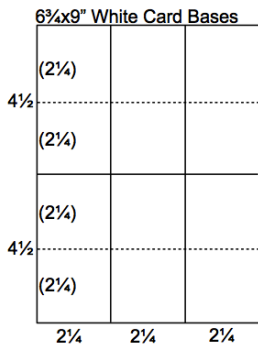
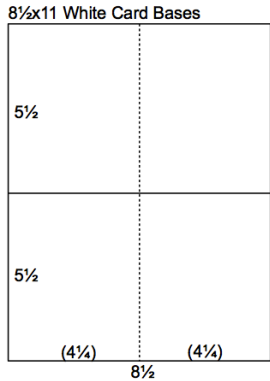
10½x12 White Box Base



10½x11½ Black Box Lid

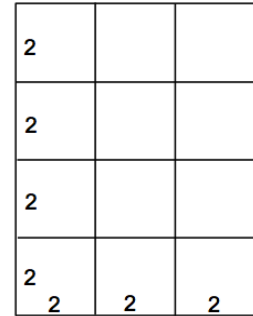


Cutting:

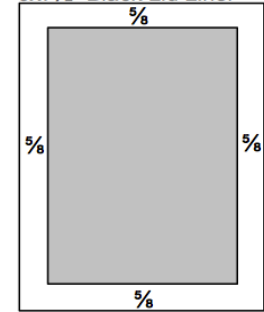


1. Trim each 8.5x11 White Card Base horizontally at 5½". Fold each piece in half to make a card base.
2. Cut the 6¾x9 White Card Bases horizontally at 4½". Trim the strips horizontally at 4½ and 2¼". Fold each piece in half to make a card base.
3. Cut the 6x8 Black Card Matte vertically at 4, and 2". Trim each 2x8 horizontally at 6, 4 and 2".
4. Place the Black Box Lid on a cutting mat with the bump of the score facing up. Mark a frame 2¾" from each outside edge. Use a craft knife and cutting mat to remove the frame.
5. With a ruler and pencil, mark ⅝" from each edge of the 6x7½" Lid Liner. Remove the inner rectangle with a ruler and craft knife.
6. Fold long flaps of the lid, mark the center of the flap, and punch on envelope punch board. (Punch ¾" from the inner scoreline.)
7. Cut darts along scorelines of the White Box Base and Black Box Lid to create tabs and remove excess paper from corners. Fold along the scorelines and burnish with a bone folder. (See diagrams below.)
8. On the base and lid, fold and glue the long flaps up to form a 90 degree angle, tuck in the tabs, and fold the short flaps up and over the tabs.

6x8 Black Card Matte



6x7½" Black Lid Liner



9. Fold along the scorelines of the White Vertical and Horizontal Dividers. Glue the folds together on each strip to form a divider tab. Glue the dividers into the box base. Use glue to tack the divider walls in place.
10. Glue the 5¾x7¼" Transparency Film to the window of the lid liner. Adhere the frame to the inside window of the lid.
11. Glue dividers to the base and tack side walls to the box base.
12. Trim six stamped and decorated panels to 3¾x5" pieces. Nest onto the 4x5¼" Black Panels and 4¼x5½" White card bases.
13. Trim twelve stamped White panels to 1¾x1¾". Nest onto the 2x2" Black Panels and 2¼" White card bases.
14. Wrap the cards with lengths of ribbon and tie in a bow. Add the cards and envelopes to the corresponding compartments.

