

Assembly Line Scrapbooking

Special Edition Club Scrap® Collection

Lovin' It

Materials:

€ Lovin' It CS® Collection

Tools:

- € 12" Paper Trimmer
- € 13" CS® Grid Ruler
- € Adhesive
- € Scissors

Fraction to Decimal Conversions

$1/8" = .125"$ $1/2" = .5"$ $7/8" = .875"$

$1/4" = .25"$ $5/8" = .625"$

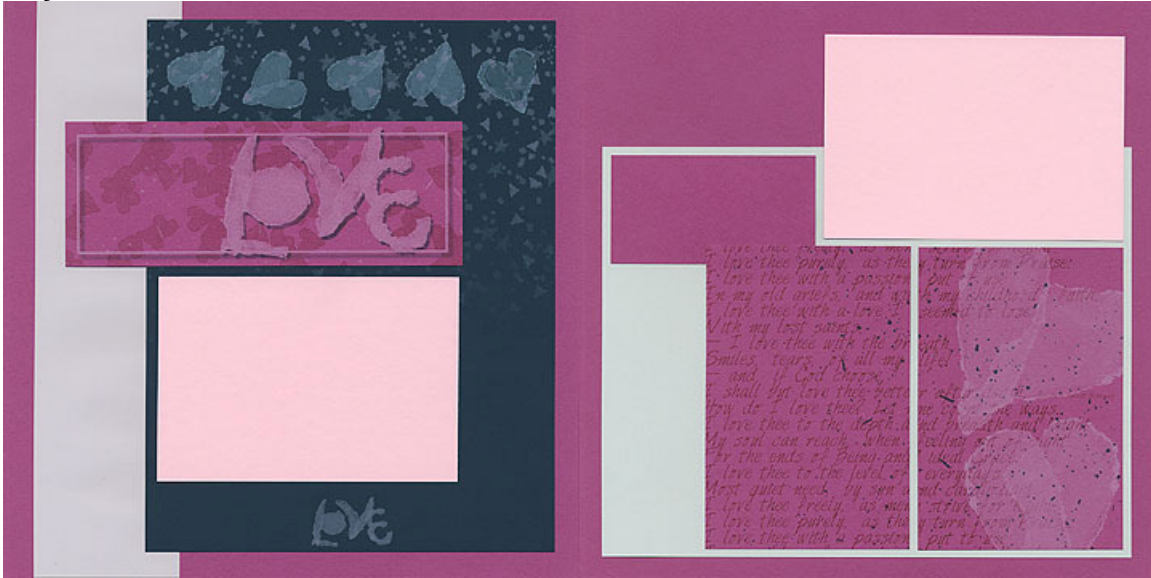
$3/8" = .375"$ $3/4" = .75"$



All rights reserved ©2010,
Club Scrap, Inc.

(888) 634-9100 • www.clubscrap.com • email: info@clubscrap.com

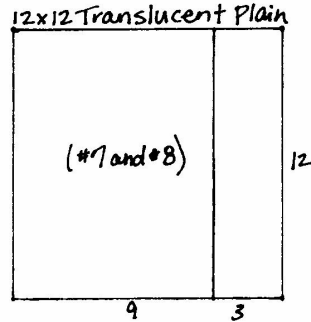
Layout #1 and #2



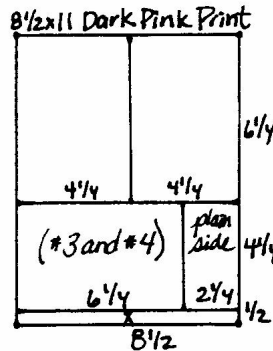
- (2) 12x12 Dark Pink Plains
- 12x12 Translucent Plain
- 8.5x11 Midnight Print
- 8.5x11 Dark Pink Print

- 8.5x11 Grey Plain
- (2) 4.25x6.25 Light Pink Photo Mattes
- Dark Pink Cutout

1. Trim the 12x12 Translucent Plain at 9".



2. Cut the 8.5x11 Dark Pink horizontally at 10.5 and 6.25". Trim the 6.25x8.5 horizontally at 4.25". Cut the 4.25x8.5 horizontally at 6.25".



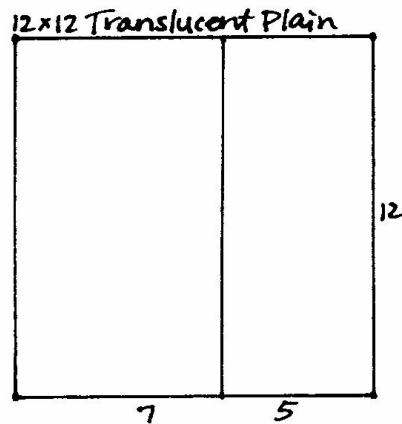
Layout #3 and #4



- 12x12 Grey Print
- 12x12 Midnight Plain
- 12x12 Translucent Plain
- 8.5x11 Light Pink Plain

- (2) 4.25x6.25 Midnight Photo Mattes
- 4.25x6.25 Light Pink Photo Matte
- 4.25x6.25 Dark Print (From Layout #1 and #2)
- Dark Pink Cutouts

1. Trim the 12x12 Translucent Plain at 7".

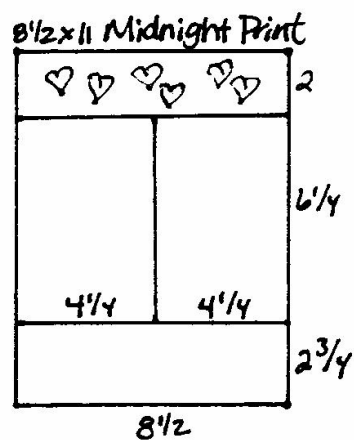


Layout #5 and #6

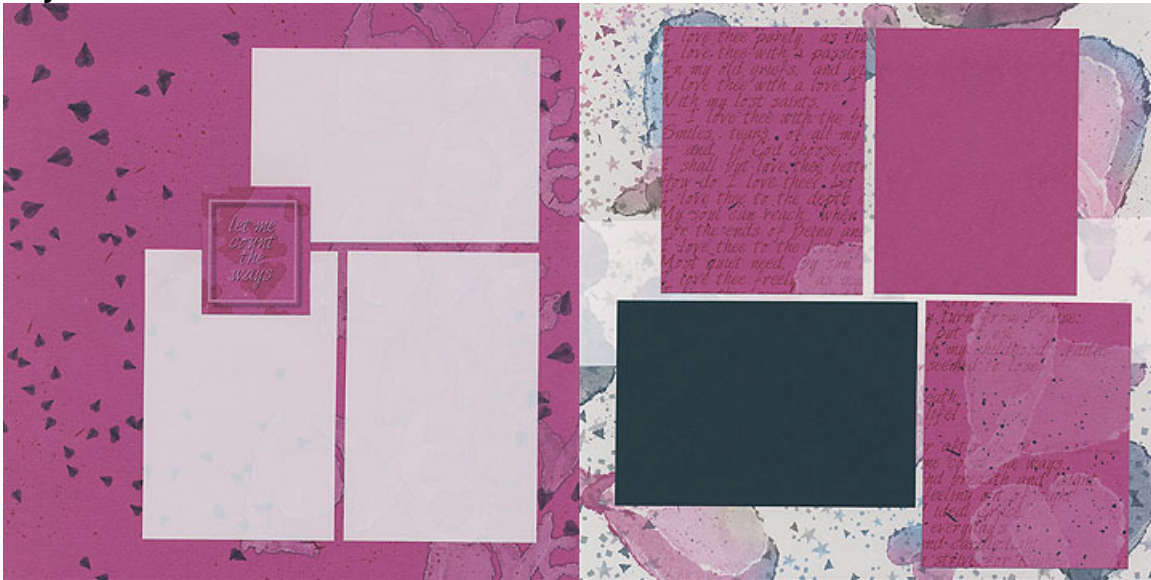


- 12x12 Midnight Plain
- 12x12 Dark Pink Print
- 8.5x11 Midnight Print
- 8.5x11 Light Pink Plain
- (3) 4.25x6.25 Grey Photo Mattes
- Dark Pink Cutouts

1. Place the 8.5x11 Midnight Print into the trimmer horizontally with the hearts on the right side; trim at 9 and 2.75". Cut the 6.25x8.5 horizontally at 4.25".

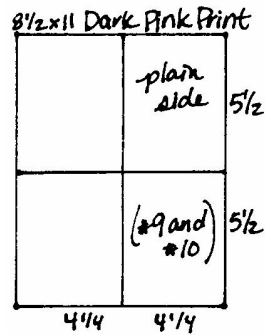


Layout #7 and #8

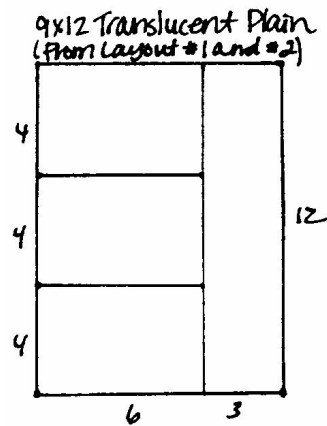


- 12x12 Dark Pink Print
- 12x12 Grey Print
- 9x12 Translucent Plain (From Layout #1 and #2)
- 8.5x11 Dark Pink Print
- 4.25x6.25 Midnight Photo Matte
- Dark Pink Cutout

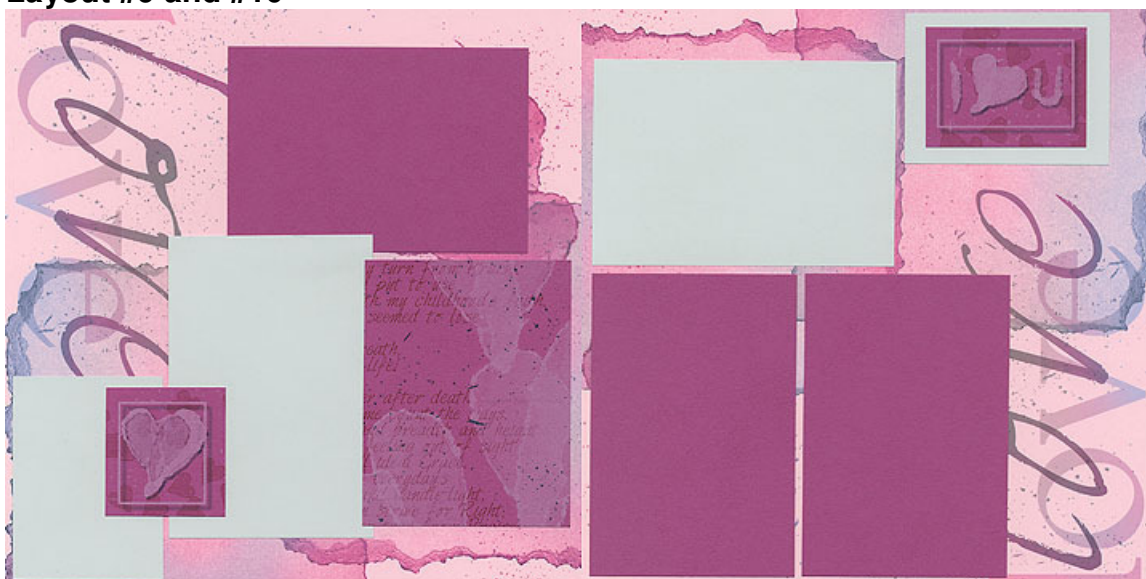
1. Trim the 8.5x11 Dark Pink Print vertically at 4.25". Cut each 4.25x11 horizontally at 5.5".



2. Cut the 9x12 Translucent Plain vertically at 6". Trim the 6x12 horizontally at 8 and 4".



Layout #9 and #10



- (2) 12x12 Light Pink Prints
- 8.5x11 Grey Plain
- 4.25x5.5 Dark Pink Print (From Layout #7 and #8)
- (3) 4.25x6.25 Dark Pink Photo Mattes
- Dark Pink Cutouts

1. Trim the 8.5x11 Grey Plain horizontally at 10.5 and 6.25". Cut the 6.25x8.5 horizontally at 4.25". Trim the 4.25x8.5 horizontally at 6 and 3".

