



Assembly Line Scrapbooking

April 2016 Club Scrap® Lite Dahlia

Materials:

- Dahlia CS® Lite Kit

Tools and Supplies:

- 12" Paper Trimmer
- Adhesive
- Foam Adhesive
- Tape
- 3x14" CS® Grid Ruler
- CS® Glue Pen
- CS® White Pigment Ink
- CS® Ink Applicator
- Scissors
- Craft Knife and Cutting Mat
- Stapler and Staples

Measurement Conversions:

- .125 = $\frac{1}{8}$ "
- .25 = $\frac{1}{4}$ "
- .375 = $\frac{3}{8}$ "
- .5 = $\frac{1}{2}$ "
- .625 = $\frac{5}{8}$ "
- .75 = $\frac{3}{4}$ "
- .875 = $\frac{7}{8}$ "

LB = Left Base Page

RB = Right Base Page

Preparation:

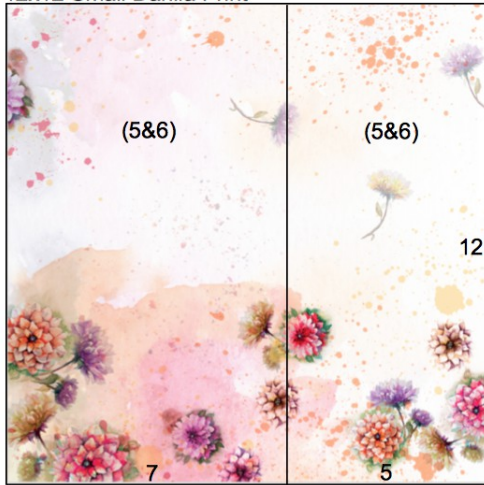
Trim the White and Yellow printed cutaparts into sections as indicated by the artwork.

**If you do not have an item to complete the layout as shown, simply omit or substitute the item.*



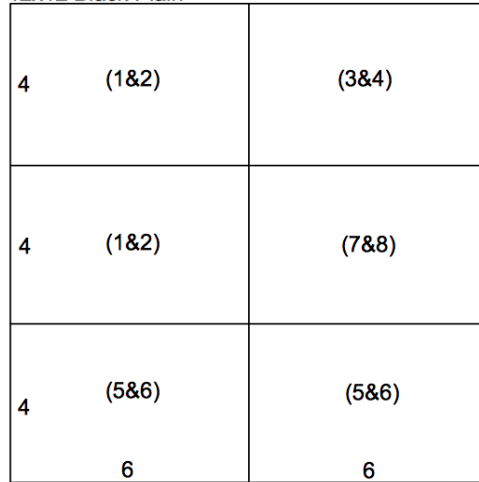
Paper Trimming Instructions

12x12 Small Dahlia Print



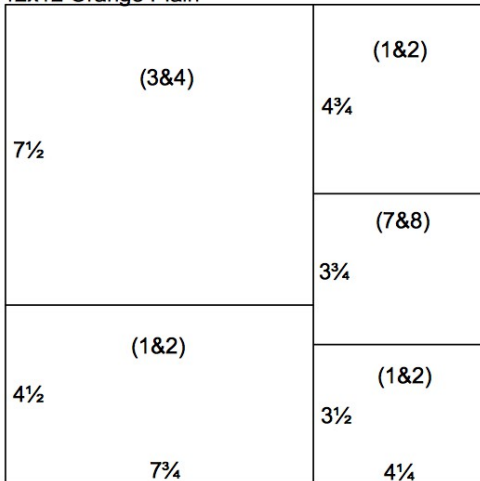
1. Place one 12x12 Small Dahlia Print in the trimmer with the flowers along the bottom edge. Trim at 7”.

12x12 Black Plain



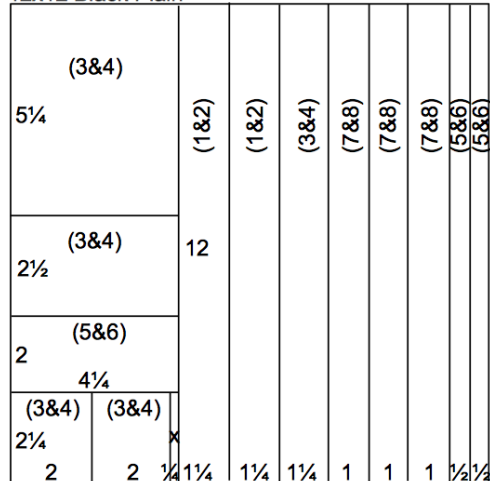
2. Cut one 12x12 Black Plain at 6”. Trim each 6x12 horizontally at 8 and 4”.

12x12 Orange Plain



3. Trim one 12x12 Orange Plain at 7.75”. Cut the 7.75x12 horizontally at 7.5”. Trim the 4.25x12 horizontally at 8.5 and 4.75”.

12x12 Black Plain



4. Cut the other 12x12 Black Plain at 11.5, 11, 10, 9, 8, 6.75, 5.5, and 4.25”. Trim the 4.25x12 horizontally at 9.75, 7.75, and 5.25”. Cut the 2.25x4.25 horizontally at 4 and 2”.



Layout 1 & 2



- 12x12 Orange Plain (LB)
- 12x12 Large Dahlia Print (RB)
- (2) 4x6 Black Plains
- (2) 1.25x12 Black Plains
- 4.5x7.75 Orange Plain
- 4.25x4.75 Orange Plain
- 3.5x4.25 Orange Plain
- (2) 4.25x6.25 White Photo Mats
- 4.25x6.25 Black Photo Mat
- Yellow Cutaparts
- White Cutapart
- Dahlia Stencil
- Glassine Envelope
- Silk Petal
- Orange Printed Satin Ribbon
- Die Cut Grosgrain Ribbon
- Silver Dahlia Charm



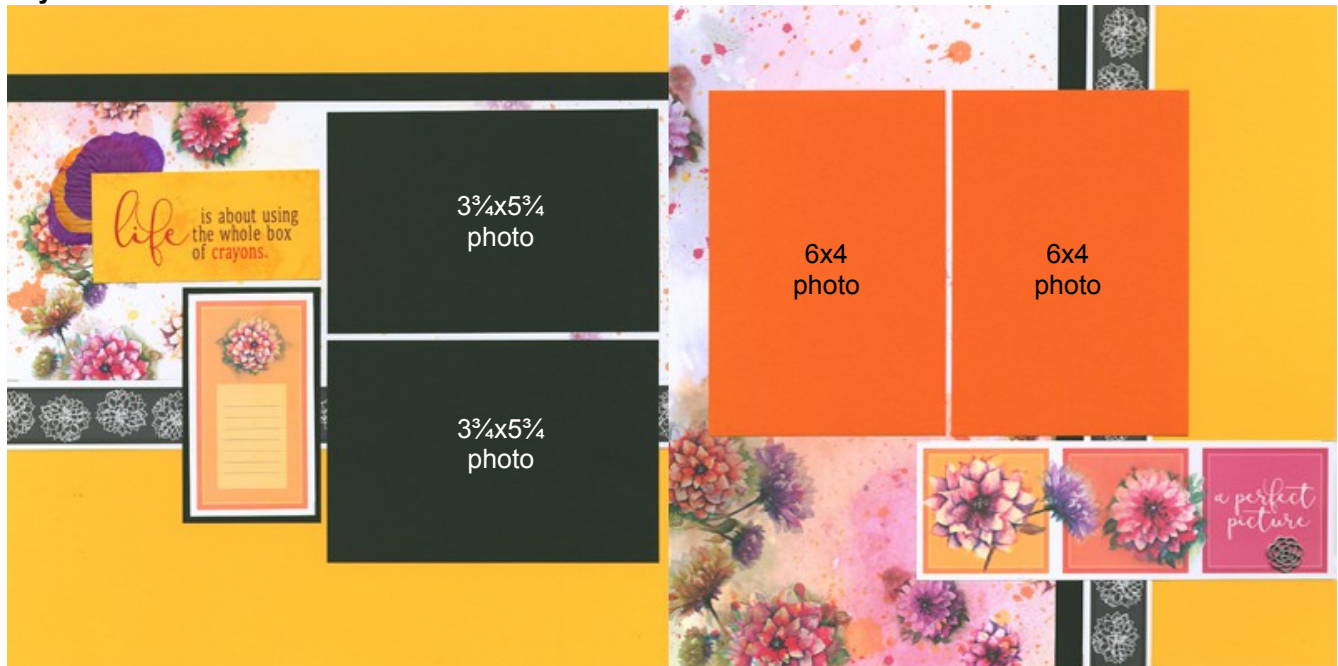
Layout 3 & 4



- 12x12 Pink Plain (LB)
- 12x12 Small Dahlia Print (RB)
- 7.5x7.75 Orange Plain
- 4x6 Black Plain
- 1.25x12 Black Plain
- 4.25x5.25 Black Plain
- 2.5x4.25 Black Plain
- (2) 2x2.25 Black Plains
- (2) 4.25x6.25 Pink Photo Mats
- 4.25x6.25 White Photo Mat
- Yellow Cutaparts
- White Cutapart
- Glassine Envelope
- (3) Silk Petals
- Die Cut Grosgrain Ribbon
- Silver Dahlia Charm



Layout 5 & 6



- (2) 12x12 Yellow Plains (LB & RB)
- 7x12 Small Dahlia Print
- 5x12 Small Dahlia Print
- (2) 4x6 Black Plains
- (2) .5x12 Black Plains
- 2x4.25 Black Plain
- (2) 4.25x6.25 Orange Photo Mats
- White Cutaparts
- Yellow Cutapart
- Silver Dahlia Charm
- (3) Silk Petals



Layout 7 & 8



- 12x12 Pink Plain (LB)
- 12x12 Large Dahlia Print (RB)
- 4x6 Black Plain
- (3) 1x12 Black Plains
- 3.75x4.25 Orange Plain
- (2) 4.25x6.25 Black Photo Mats
- 4.25x6.25 Pink Photo Mat
- 4.25x6.25 Orange Photo Mat
- White Cutaparts
- Yellow Cutaparts
- Dahlia Stencil
- (2) Glassine Envelopes
- Orange Printed Satin Ribbon
- Silver Dahlia Charm

