

## February 2008 *Greetings to Go* **Bridges**

### **Materials:**

- “Bridges” Greetings to Go
- “Bridges” Wood Mounted Stamp Set
- “Bridges” Unmounted Borders & Backgrounds and Fonts
- Wood Mounted Stamp: “Walls Turned Sideways are Bridges”
- Wood Mounted Stamp: “Carpe Diem”
- Waxed Linen Thread
- (2) Ribbon Brads

### **Tools:**

- Adhesive
- Paper Trimmer
- Scissors
- Tape
- Bone Folder
- Stylus Tool with Blender Tip
- Craft Knife and Cutting Mat
- Ruler
- Black Ink
- Memories Blackberry Ink
- Stapler
- Paper Piercing Tool and Corkboard

Fold all cards carefully along the pre-scored lines. For best results, the “bump” of the score line should be folded into the inside of the card. Be sure that the edges of the card are perfectly aligned prior to making the fold. Reinforce all folds with a bone folder.

The edges of the cards, panels, and die cuts have been defined with ink. Instructions to ink edges are not included below.



**Set A:**

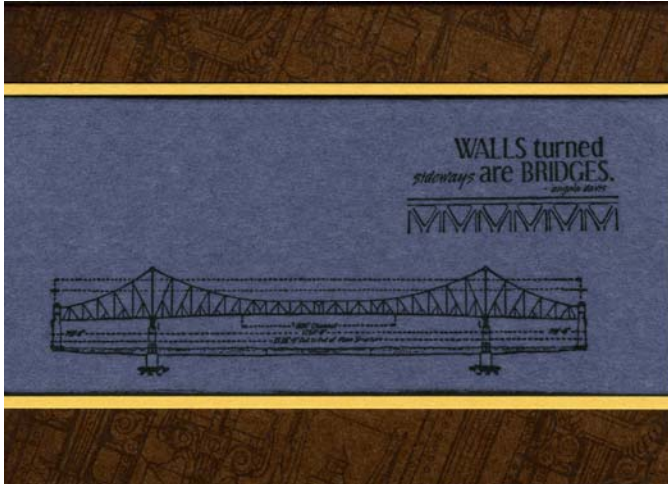
**4-1/2x6-1/4 Dark Brown Cards with Yellow and Stonewash Panels**

**Card #1**



- Dark Brown Card with Yellow and Stonewash Panels
  - White Die Cut: "Best Wishes"
  - Brown Satin Ribbon
1. Thread the White die cut with two lengths of brown satin ribbon. Attach the die cut to a vertical Stonewash panel. Tuck the ribbon ends around to the back of the panel and secure with tape.
  2. Layer the Stonewash panel onto the Yellow panel, and attach the panels to the Dark Brown card.

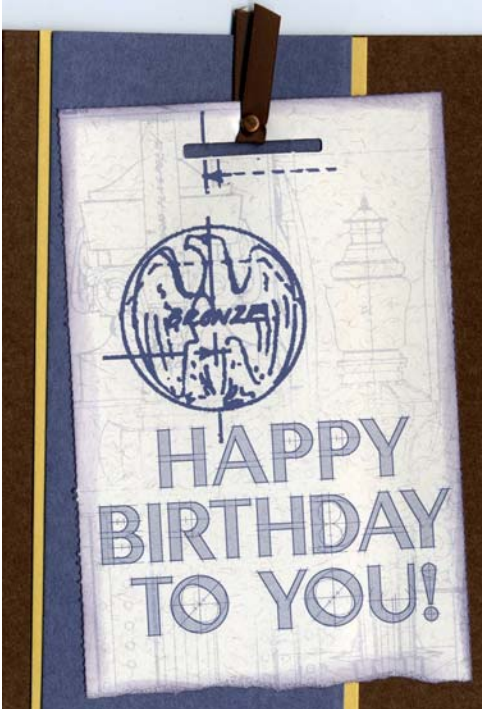
**Card #2**



- Dark Brown Card with Yellow and Stonewash Panels
  - WM Bridge
  - WM Stamp: "Walls Turned Sideways..."
  - UM Borders & Backgrounds
  - Black Ink
1. Stamp the WM Bridge and quote onto the Stonewash panel; layer onto the Yellow panel.
  2. Stamp the UM engineer's drawing onto the Dark Brown card repeatedly with black ink. Tip: When stamping backgrounds, stamp at an angle to hide any imperfections in the repeating pattern.
  3. Attach the layered panels onto the center of the card.



**Card #3**



- Dark Brown Card with Yellow and Stonewash Panels
  - White Die Cut: "Happy Birthday to You"
  - Brown Satin Ribbon
  - Miniature Brad
  - Blackberry Ink
1. Tear the bottom edge from the White die cut; ink edges with Blackberry ink. Attach a short length of brown satin ribbon to the top of the die cut tag with a mini brad.
  2. Layer the Stonewash panel onto the Yellow panel; attach the panels to the left edge of the card. Place the die cut at an angle onto the card.

**Card #4**



- Dark Brown Card with Yellow and Stonewash Panels
  - Additional Stonewash Panel
  - White Die Cut: "Happy Anniversary"
1. Trim one Stonewash panel vertically at 2". Cut the Yellow panel vertically at 2".
  2. Nest the .75" Stonewash strip onto the 1" Yellow strip. Thread the strips through the top of the die cut tag.
  3. Attach the die cut to the center of the Stonewash panel. Layer the panel onto the card.



**Card #5**

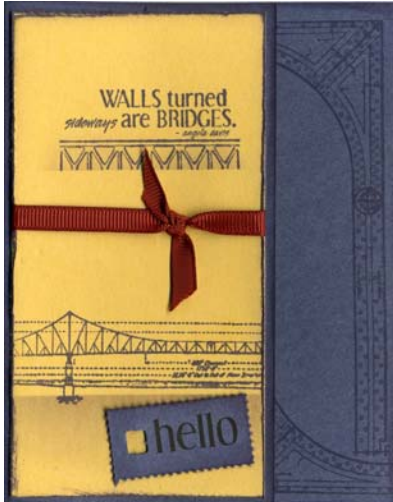


- Dark Brown Card
  - 2x6-1/4" Stonewash Panel (from Card #A4)
  - 2x6-1/4" Yellow Panel (from Card #A4)
  - UM Borders & Backgrounds
  - White Die Cut: "May Your Heart and Soul..."
  - Brown Satin Ribbon
  - Blackberry Ink
1. Stamp the entire Stonewash panel repeatedly with the UM engineer's drawing and blackberry ink. Tear the right edge of the panel so that it is slightly smaller than the Yellow Panel. Attach both panels to the left edge of the card.
  2. Staple the brown satin ribbon to the top of the die cut tag. Sponge blackberry ink onto the eagle image. Layer the tag onto the card.

**Set B:**

**4-1/4x5-1/2 Double Scored Stonewash Cards with Yellow Panels**

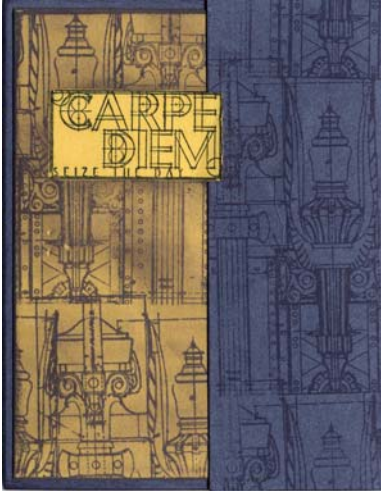
**Card #1**



- Stonewash Card with Yellow Panel
  - Rust Grosgrain Ribbon
  - Blackberry Ink
  - WM Stamp: "Walls Turned Sideways..."
  - WM Stamp: Suspension Bridge
  - UM Borders & Backgrounds
  - Stonewash Die Cut: "Hello"
  - Stylus Tool with Blender Tip or Sponge
1. Stamp "Walls Turned Sideways..." and the WM Bridge onto the Yellow panel with Blackberry ink. Place a paper mask beneath the bridge, and lightly apply ink to create a horizon.
  2. Wrap the grosgrain ribbon around the Yellow panel; tie a knot and trim the ends. Attach the panel to the card.
  3. Stamp the UM bracket image onto the upper and lower corners of the narrow flap of the card.



### Card #2



- Stonewash Card with Yellow Panel
- WM "Carpe Diem" Stamp
- UM Borders & Backgrounds
- Blackberry Ink

1. Stamp "Carpe Diem" onto the upper center of the Yellow panel with Blackberry ink.
2. Stamp a second "Carpe Diem" image onto a sticky note to create a mask. Cut out the image. Place the mask over the stamped image on the panel.
3. Stamp the UM engineer's drawing onto the entire Yellow panel (with mask in place). Lightly sponge Blackberry ink onto the entire panel. Remove the mask.
4. Stamp the UM engineer's drawing onto the narrow flap of the Stonewash card with Blackberry ink.
5. Center the Yellow panel onto the wide flap without adhesive. Temporarily close the card with the narrow flap on top. Mark where the edge of the flap meets the stamped "Carpe Diem" image. Cut along the right edge of the stamped image where indicated with a craft knife to create a tab opening for the narrow flap to slide into.
6. Attach the Yellow panel onto the wide flap of the card. Do not apply adhesive into the area that will overlap onto the narrow flap. Tuck the narrow flap beneath the Yellow tab.

### Card #3



- Stonewash Card with Yellow Panel
- UM Borders & Backgrounds
- Stonewash Die Cut: "Miss You"
- Metal Coin Charm
- Miniature Brad
- Blackberry Ink

1. Ink the UM engineer's drawing with Blackberry ink. Stamp onto a piece of scrap paper, and then stamp onto the Yellow panel to achieve a soft look. Repeat until entire panel is covered.
2. Stamp the UM quote onto the lower left corner of the panel with Blackberry ink.
3. Attach the metal coin charm to the panel with a mini brad.
4. Attach the "miss you" die cut onto the upper right corner of the panel.
5. Attach the panel to the wide flap of the card, being careful to apply adhesive to the left edge of the panel only.



**Card #4**



- Stonewash Card with Yellow Panel
  - UM Borders & Backgrounds
  - (2) Miniature Brads
  - White Die Cut: "Hi"
  - Blackberry and Black Ink
1. Stamp the UM bracket image onto the upper left and lower right corner of a horizontal Yellow panel with Blackberry ink. Sponge ink into the stamped areas.
  2. Attach a mini brad into the circular area of the images.
  3. Layer the White die cut onto the left side of the panel; attach the panel to the card.
  4. Stamp the UM quote onto the narrow flap of the card with black ink.

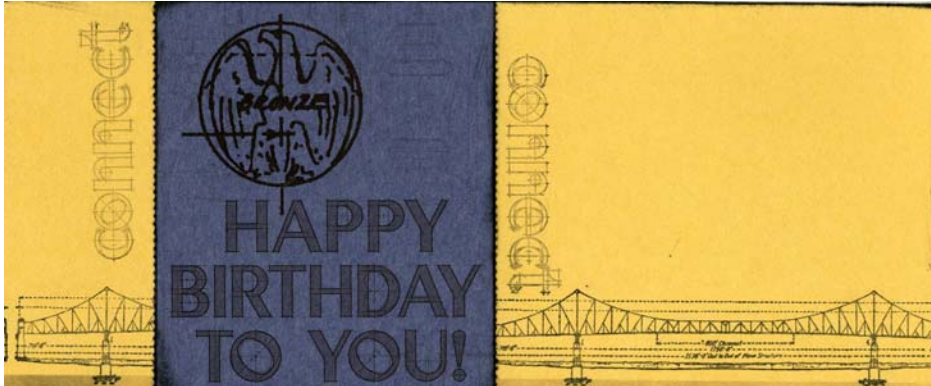
**Card #5**



- Stonewash Card with Yellow Panel
  - UM Borders & Backgrounds
  - WM Stamp Set
  - Stonewash Die Cut: "HB"
  - Brown Satin Ribbon
  - Blackberry Ink
1. Stamp the small WM image onto the Yellow panel repeatedly with Blackberry ink, "stamping off" each time to achieve a soft effect.
  2. Stamp the UM compass image into the upper left corner of the panel. Stamp the UM quote onto the lower center.
  3. Attach the Stonewash die cut to the upper right corner of the Yellow panel.
  4. Make a small loop with a piece of brown satin ribbon. Tape to the edge of the wide flap of the Stonewash card. Layer the panel onto the flap.
  5. Stamp the WM Bridge onto the narrow flap with blackberry ink.



**Set C:**  
**4-1/8x9-3/4 Yellow Cards with Light Brown Panels**  
**Card #1**



- Yellow Card
- Stonewash Die Cut: "Happy Birthday to You"
- UM Borders & Backgrounds
- WM Bridge
- Black Ink

1. Stamp the WM bridge image along the bottom edge of a horizontal card with black ink. Place a mask over the top of the bridge, and gently sponge ink to create a horizon line.
2. Trim the Stonewash die cut to match the height of the card (4-1/8"). Layer onto the card.
3. Stamp the UM "connect" on either side of the die cut, stamping off onto scratch paper first to lighten the ink intensity.

**Card #2**

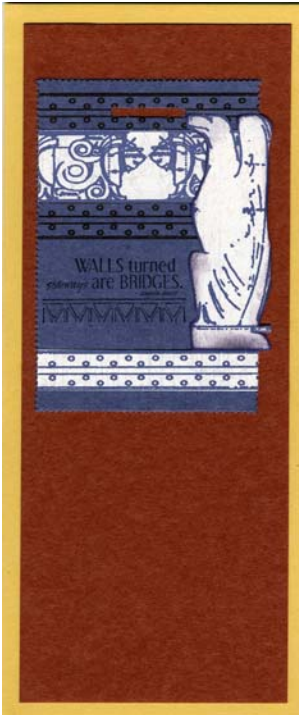


- Yellow Card with Light Brown Panel
- Stonewash Die Cut: "Congratulations"
- UM Font
- UM Borders & Backgrounds
- Brown Waxed Linen Thread
- (2) Brown Ribbon Brads
- Seed Beads
- Blackberry Ink

1. Stamp a strip of letters from the UM Font at an angle across the Light Brown panel with Blackberry ink.
2. Randomly stamp several small UM circles onto the panel with Blackberry ink.
3. Attach two brown ribbon brads to the top of the tag opening. Tie a piece of waxed linen to each opening and thread with beads. Attach the die cut to the Light Brown panel, wrap thread ends around to the back and secure with tape.
4. Attach the Light Brown panel to the card.

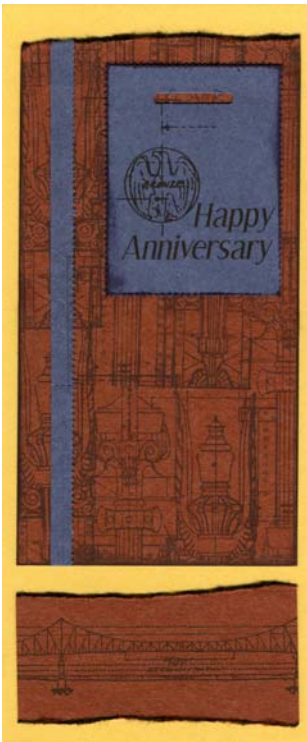


**Card #3**



- Yellow Card with Light Brown Panel
  - Stonewash Die Cut: "Bridge Components"
  - WM Stamp: "Walls Turned Sideways..."
  - White Die Cuts: "Bridge Components" and "Congratulations"
  - Blackberry Ink
1. Trim selected printed strips from the White die cut, and layer onto the same areas of the matching Stonewash die cut.
  2. Stamp "Walls Turned Sideways" onto the Stonewash die cut with Blackberry ink. Attach the die cuts to the upper center of the Brown panel.
  3. Trim the eagle image from the White "congratulations" die cut with a detail scissors. Ink edges with Blackberry ink and layer onto the panel. Attach the panel to the card.

**Card #4**

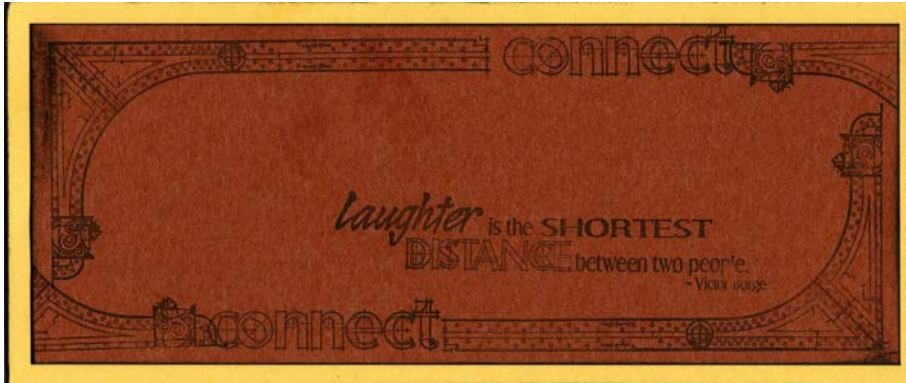


- Yellow Card with Light Brown Panel
  - Stonewash Die Cut: "Happy Anniversary"
  - WM Bridge Stamp
  - UM Borders & Backgrounds
  - Black Ink
1. Stamp the WM Bridge onto the top edge of a vertical Light Brown panel with black ink. Tear the bridge image from the panel; tear the top edge, as well.
  2. Stamp the UM engineer's drawing repeatedly onto the remaining portion of the Light Brown panel with black ink.
  3. Tear away a long strip from the edge of the Stonewash die cuts. Attach the strip to the left edge of the Brown panel. Attach the Stonewash die cut to the upper right corner of the panel.
  4. Layer the Light Brown panel onto the upper half of the card. Attach the torn bridge image to the bottom of the card.





Card #5



- Yellow Card with Light Brown Panel
  - UM Borders & Backgrounds
  - Black Ink
1. Stamp the UM bridge bracket into the upper left and lower right corners of the Light Brown panel with black ink.
  2. Stamp the UM “connect” as shown, and stamp an additional portion of the bridge bracket around the perimeter of the panel.
  3. Stamp the UM quote onto the lower right corner of the panel with black ink. Layer the panel onto the card.

