

# Assembly Line Scrapbooking

## January 2011 *Greetings to Go* Lotus Pond

### Materials:

- *Lotus Pond* Greetings to Go
- *Lotus Pond* Unmounted Borders & Backgrounds and FontArt
- *Lotus Pond* Wood Mounted “Water Garden” Stamp
- *Lotus Pond* Wood Mounted “Just for You” Stamp

### Tools and Supplies:

- 12” Paper Trimmer
- Scissors
- Adhesive
- CS® Grid Ruler
- Paper Piercing Tool and Cork Board
- Watercolor Crayons
- Water Spray Bottle
- Glitter Glue
- CS® Onyx, Fuchsia and Moss Ink
- Foam Adhesive
- Tape
- White Photo Mounting Corners
- Stapler and Staples
- Corner Rounder Punch

### Measurement Conversions:

.25 = ¼”

.5 = ½”

.75 = ¾”

*Notes: Trim the 12x12 White Cutaparts into sections as indicated by the border areas. Remove the Green die cuts from the parent sheet. Fold all cards along score lines and reinforce creases with a bone folder. Before making creases, check to make sure that all edges are aligned.*

*If you do not have an item required to complete a card, simply omit the step or substitute the item.*



**Set A: 5-1/4 x 5-1/4" Blue Cards with 5x5" Pink Panels**

**Card #1**



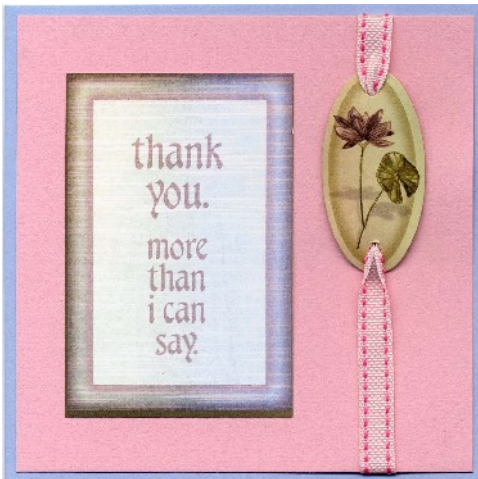
- Blue Card with Pink Panel
  - White Cutapart: "With Deepest Sympathy"
  - Green Die Cut: Circular Flower
  - Pink Pinstripe Ribbon
1. Wrap ribbon around the upper half of the White cutapart, and secure ends at the back with tape. Place the Green die cut onto the ribbon with foam adhesive.
  2. Layer the White cutapart onto the Pink panel and card.

**Card #2**



- Blue Card with Pink Panel
  - White Cutapart: "Happy Anniversary"
  - Glitter Glue
1. Nest the White cutapart onto the Pink panel and layer onto the card.
  2. Add a small amount of glitter glue to the lily pad leaves and set aside to dry completely.

**Card #3**



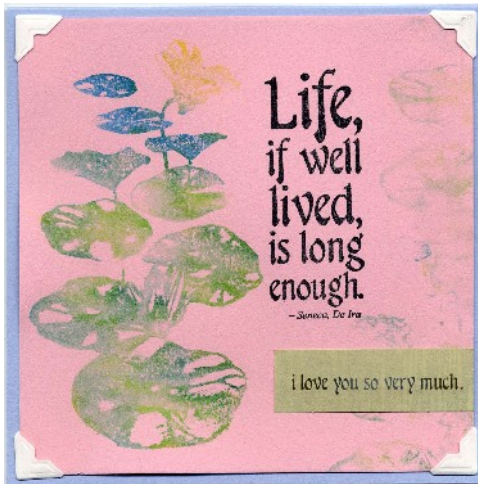
- Blue Card with Pink Panel
  - White Cutapart: "Thank You. More Than I Can Say"
  - Green Die Cut: Oval Flower
  - Pink Pinstripe Ribbon
1. Thread the ribbon through the holes in the Green tag and attach to the Pink panel with foam adhesive. Wrap ribbon ends around to the back of the panel and secure with tape.
  2. Attach the White cutapart to the Pink panel. Nest the panel onto the card.

**Card #4**



- Blue Card with Pink Panel
  - White Cutapart: Stem Trio
  - Green Die Cuts: “Happy” and “Happy Birthday”
  - Sheer Ribbon
  - White Flower Shaped Brad
1. Attach the White cutapart to the left side of the Pink panel.
  2. Loop the sheer ribbon around the top of the Green die cut frame and attach to the panel. Secure the ribbon ends behind the top edge of the panel. Attach the bottom corner of the die cut with the brad.
  3. Attach the Green “Happy” die cut to the center of the circular opening with foam adhesive.
  4. Nest the Pink panel onto the Blue card and add glitter glue to the flower and leaves on the cutapart.

**Card #5**

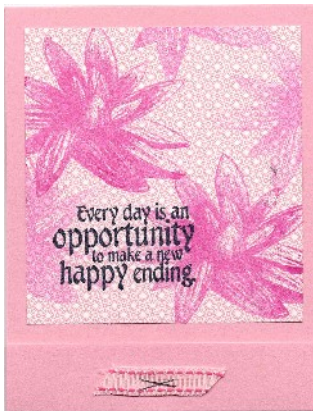


- Blue Card with Pink Panel
  - Green Die Cut: “I Love You So Very Much”
  - Wood Mounted “Water Garden” Stamp
  - Unmounted Borders & Backgrounds
  - (4) White Photo Mounting Corners
1. Mist the WM stamp with water and color with watercolor crayons. Stamp onto the left side of the Pink panel. Mist and stamp again to add a softer image to the right edge of the panel.
  2. Stamp the UM quote onto the panel. Attach the Green die cut to the panel.
  3. Attach the panel to the card with white photo mounting corners.

**Set B: 4-1/4x5-1/2” Pink Matchbook Cards with 3-3/4x4” Pink Pattern and 4x5-1/4” White Panels**

*Note: The long flap of the folded Pink card will tuck into the short flap. Layer the White panel inside the card, if desired. Staple the short flap, and tuck the long flap inside like a matchbook.*

**Card #1**



- Pink Card with Pink Pattern and White Panels
  - UM Borders & Backgrounds
  - Pink Pinstripe Ribbon
1. Stamp the UM lotus flower onto the Pink Pattern panel with Fuchsia ink. Stamp again without re-inking. Repeat. Stamp the UM quote onto the panel with Onyx ink.
  2. Nest the panel onto the card. Layer the White panel on the inside of the card. Hold the narrow panel in place with two staples and a 1-1/2” piece of pink pinstripe ribbon.



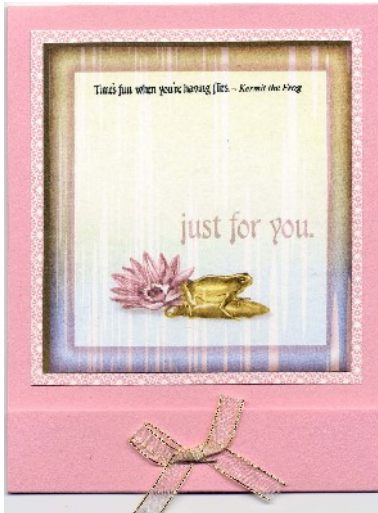


**Card #2**



- Pink Card with Pink Pattern and White Panels
  - Green Die Cut: "Happy Birthday"
  - Unmounted FontArt
  - Pink Pinstripe Ribbon
  - White Flower Shaped Brad
1. Layer the Green die cut onto the Pink Pattern panel with the brad.
  2. Stamp above and below the die cut with the UM "Ribbit" border. *Tip: Mount the UM border stamp onto the acrylic CS® Grid Ruler for great results!*
  3. Layer the panel onto the card. Nest the White panel to the inside of the card. Secure the narrow panel with a staple and folded ribbon.

**Card #3**



- Pink Card with Pink Pattern and White Panels
  - White Cutpart: "Just for You"
  - UM Borders & Backgrounds
  - Sheer Ribbon
1. Stamp the UM "Time's Fun. . ." quote onto the White cutpart with Onyx ink. Layer the cutpart onto the Pink Pattern panel and nest the panel onto the card.
  2. Place the White panel inside the card and staple the narrow flap into place along with a bow made of sheer ribbon.

**Card #4**



- Pink Card with Pink Pattern and White Panels
  - Green Die Cuts: "Happy Birthday" Trio
  - UM Borders & Backgrounds
  - (3) White Flower Shaped Brads
1. Nest the Pink Pattern panel onto the card. Set a brad into the hole on the left edge of each Green die cut tag, and attach the tags onto the panel.
  2. Attach the White panel to the inside of the card. Staple the narrow card flap in place and stamp the UM quote just above the staple.



**Card #5**



- Pink Card with Pink Pattern and White Panels
- Green Die Cuts: "Ribbit" and Frog
- UM Borders & Backgrounds
- Pink Pinstripe Ribbon
- White Flower Shaped Brad

1. Stamp the UM quotes onto the top left and bottom right corners of the Pink Pattern panel with Onyx ink.
2. Attach a piece of folded ribbon to the top right corner of the Green die cut frame with a white brad. Adhere to the center of the panel. Attach the Green frog die cut to the center of the circular frame with foam adhesive.

**Set C: 4x9-1/4" Green Cards with 3-3/4x9" White Panels**

**Card #1**



- Green Card with White Panel
- Green Die Cuts: "Happy" and "Birthday"
- Sheer Ribbon
- WM "Water Garden" Stamp

1. Stamp the WM image onto the White panel with Moss ink. Stamp again without re-inking. Repeat as desired. (We liked the softer look of the "stamped off" image.)
2. Wrap two lengths of sheer ribbon around the top of the panel and secure ribbon ends. Attach the die cuts to the ribbons with foam adhesive. Nest the panel onto the card.

**Card #2**



- Green Card with White Panel
- UM Borders & Backgrounds
- WM "Just for You" Stamp

1. Stamp the UM lily pad stem onto the White panel with Moss ink. Stamp twice more without re-inking. Repeat.
2. Stamp the WM image onto the panel with Onyx ink. Nest the panel onto the card.





**Card #3**



- Green Card with White Panel
  - White Cutapart: "Congratulations"
  - Green Die Cut: "Wishing You a Joyful Anniversary"
  - White Flower Shaped Brad
1. Set the white brad into the cutapart. Attach the Green die cut with foam adhesive.
  2. Nest the cutapart onto the White panel and Green card.

**Card #4**



- Green Card with White Panel
  - White Cutapart: "Happy Birthday"
  - Green Die Cuts: Frame and Oval
  - UM Borders & Backgrounds
  - (2) White Flower Shaped Brads
  - Sheer Ribbon
1. Trim the 3.75x9" White panel horizontally at 7.5 and 5.25".
  2. Stamp the UM quote onto the center of the 1.5x3.75" White panel with Onyx ink. Place the Green die cut frame over the quote and attach with brads. Layer the panel onto the top of the card.
  3. Stamp the UM "Ribbit" onto the 2.5x3.75" White panel with Moss ink. (Ink, stamp off, and stamp onto the panel for a softer tone.)
  4. Thread sheer ribbon through the Green die cut. Attach the die cut to the panel with foam adhesive and wrap ribbon ends around to the back of the card. Layer the panel onto the bottom of the card.
  5. Attach the White cutapart to the center of the card between the two panels.

**Card #5**



- Green Card with White Panel
  - UM Borders & Backgrounds
  - UM FontArt
1. Stamp the UM Font quote onto the bottom right corner of the White panel with Onyx ink.
  2. Mist the UM images with water and color with watercolor crayons. Stamp onto the White panel and repeat.
  3. Layer the panel onto the card.

