



# Assembly Line Cardmaking

April 2017

## Cherry Blossoms

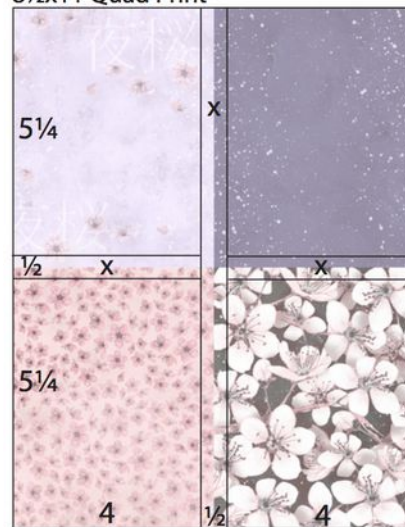
Trimming and scoring instructions for the *Cherry Blossoms* Club Stamp paper collection:  
(Makes ten cards and one split lid tray.)

8½x11 White Plain and Purple Plain



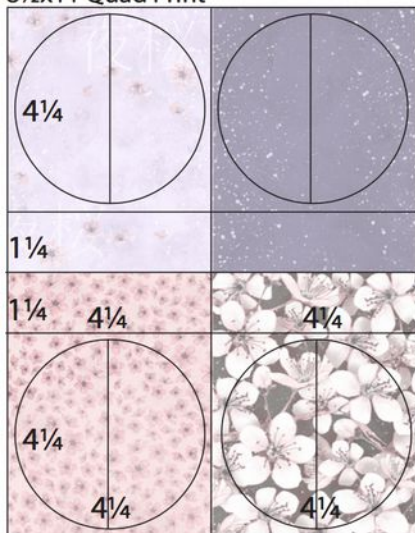
**1. Score** one 8.5x11 White Plain and one Purple plain vertically at 4.25". Cut horizontally at 5.5". Fold each 5.5x8.5 in half to make a card base.

8½x11 Quad Print



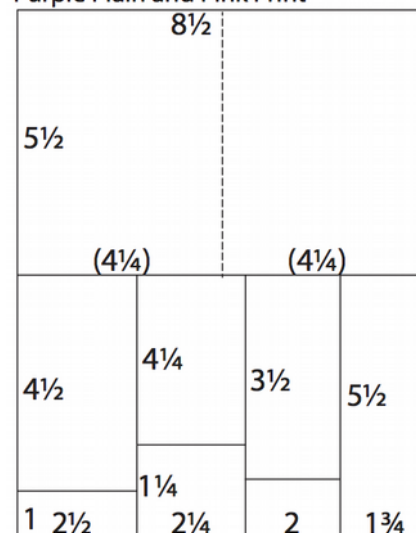
**2. Trim** one 8.5x11 Quad Print vertically at 4.5 and 4". Cut each 4x11 horizontally at 5.75 and 5.25".

8½x11 Quad Print



**3. Trim** one 8.5x11 Quad Print vertically at 4.25". Cut each 4.25x11 horizontally at 6.75, 5.5 and 4.25". Cut a circle shape from each 4.25x4.25" panel and cut each circle in half.

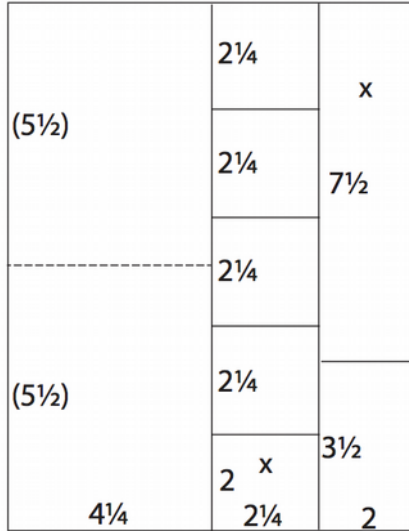
8½x11 Gray Plain, Cherry Plain Purple Plain and Pink Print



**4. Trim** one 8.5x11 Gray Plain, Cherry Plain, Purple Plain and Pink Print horizontally at 5.5". Cut one 5.5x8.5 horizontally at 6.75, 4.75, and 2.5". Trim the 5.5x2.5 horizontally at 4.5. Cut the 2.25x5.5 horizontally at 4.25". Trim the 2x5.5 horizontally at 3.5". **Score** and fold each 5.5x8.5 horizontally at 4.25" to create four card bases.

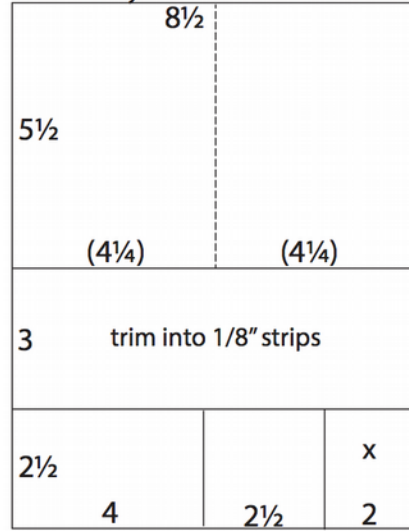


8½x11 White Plain



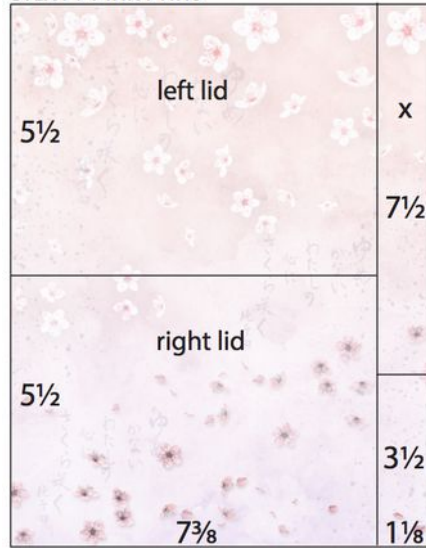
5. Trim one 8.5x11 White Plain vertically 6.5 and 4.25". Cut the 2.25x11 horizontally at 9, 6.75, 4.5 and 2.25". Trim the 2x11 horizontally at 7.5". **Score** and fold the 4.25x11 horizontally at 5.5".

8½x11 Gray Plain



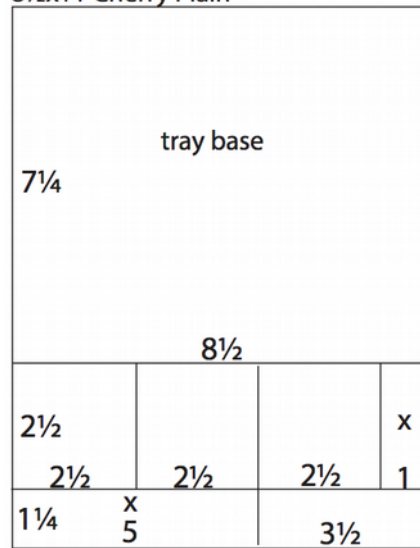
6. Trim one 8.5x11 Gray Plain horizontally at 8.5 and 5.5". Cut the 3x8.5 horizontally into 1/8" strips. Trim the 2.5x8.5 horizontally at 6.5 and 4". **Score** and fold the 5.5x8.5 horizontally at 4.25".

8½x11 Pink Print



7. Trim one 8.5x11 Pink Print vertically at 7-3/8". Trim the 7-3/8x11 horizontally at 5.5". Cut the 1-1/8x11 horizontally at 7.5".

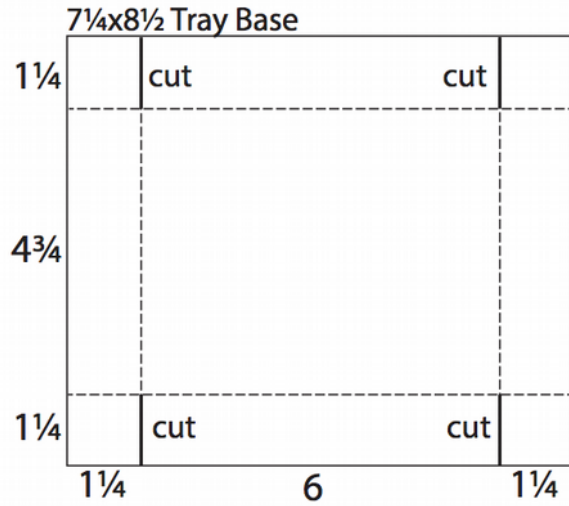
8½x11 Cherry Plain



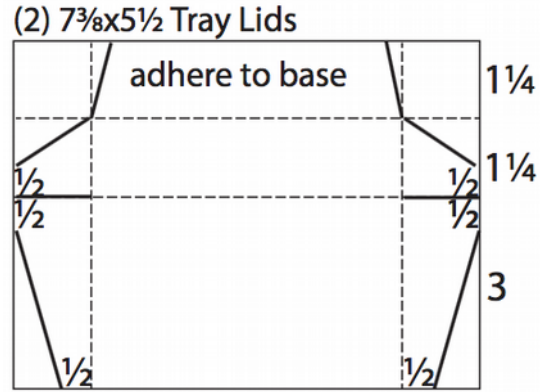
8. Cut one 8.5x11 Cherry Plain horizontally at 9.75 and 7.25". Trim the 2.5x8.5 horizontally at 7.5, 5 and 2.5". Cut the 1.25x8.5 horizontally at 5".



**Tray and Lid Assembly**



**9. Score** the 7.25x8.5 Tray base 1.25" from each outside edge. Trim along the solid lines as indicated in the diagram. Fold along all score lines, turn tabs in at a 90 degree angle and adhere to form the tray.



**10. Score** each 7-3/8x5-1/2 tray lid 1.25" from the short edges. **Score** 1.25 and 2.5" from one long edge. Cut along solid lines as indicated in the diagram. Fold on score lines and secure tabs to the 3" side walls to form one half of the lid. Adhere the 1.25" tab to the base of the tray.

Click [HERE](#) for more detailed assembly information, or visit [clubscrap.com/0417alcm](http://clubscrap.com/0417alcm)

