

# CLUB Stamp Aspen

## Card Caddy Project

by Terri Zwicker of Club Scrap®



### Project Kit:

- (5) 12x12" Green Box Lids
- (5) 10.75x12" Green Box Bases
- (10) 9.75x11.5" Pale Blue Inserts
- 8.5x11 Almond Cutapart
- Pewter Mini Brads
- (2) Yards Grosgrain Ribbon Closure

### Tools and Materials:

- Craft Knife and Cutting Mat
- CS® Grid Ruler
- Bone Folder
- CS® Bookbinding Glue and Foam Brush or Adhesive
- ScorePal®
- Scissors

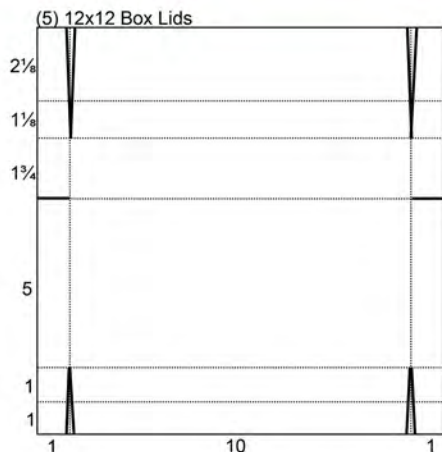


**1. Use** a ruler, craft knife and cutting mat to separate the Almond cutaparts into sections as indicated by the artwork.

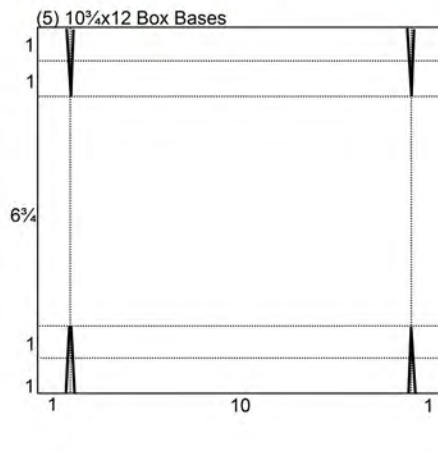
**2. Score** each 12x12" Green Box Lid at 1 and 11". Rotate the paper one turn and score at 1, 2, 7 and 8.75". Rotate the paper 180 degrees (two turns) and score at 2-1/8".

**3. Score** each 10.75x12" Green Box Base horizontally at 1 and 11". Rotate the paper vertically and score at 1, 2, 8.75 and 9.75".

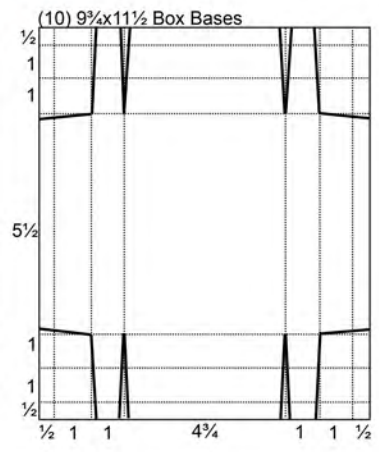
**4. Score** each 9.75x11.5" Pale Blue Insert at .5, 1.5 and 2.5" from each outside edge.



2



3



4



5. Use a scissors to make cuts along the corresponding solid lines in each diagram.
6. **Form** the Pale Blue Box Bases first. The box will be made “inside-out.” Begin with the scores positioned “bump” side down. Make a valley fold on all innermost scorelines and burnish with a bone folder. Make a mountain fold on each remaining scoreline; burnish and unfold.
7. **Use** bookbinding glue or adhesive to adhere the 1/2” area of the long side walls to the bottom of the box.
8. **Form** the short side walls, tuck in the tabs, and wrap the 1/2” tab around to the bottom of the box. Repeat for the remaining inserts.



9. **Place** a 10.75x12” Box Base on your work surface with the bump of the scores facing up. Fold the side walls up, turn in the tabs, and fold the double score long walls up and over the tabs. Glue into place. Repeat to create the remaining bases.
10. **Attach** the narrow cutapart strip to the front wall of the box lid.
11. **Adhere** the category labels to the strip. Use a ruler as your guide and follow the same measurements for subsequent lids/strips.

13. **Fold** along the scores on left and right sides of the lid.. Turn in the short tabs and bring the front wall up and over the tabs. Repeat for the remaining lids.

14. **Place** two inserts into a base and place the lid on top. Glue the long tabs around to the back wall of the base. Glue the 2-1/8” flap to the side and bottom of the base. Repeat for the remaining sets.



15. **Attach** the artwork from the cutapart to the top box intended for the stack.
16. **Hold** the boxes together with ribbon until your special occasion card is needed. Don't forget to load the trays with cards and envelopes!

Click to watch



**Aspen Club Stamp Card Caddy**  
from Club Scrap PLUS 4 days ago

Tricia Morris from Club Scrap walks you through the steps to create one section of the Card Caddy . . . Aspen's Club Stamp project.

<https://vimeo.com/81728559>

