

# CLUB STAMP

## Fire and Ice

### Note Card Case Project

by Terri Zwicker of CS®

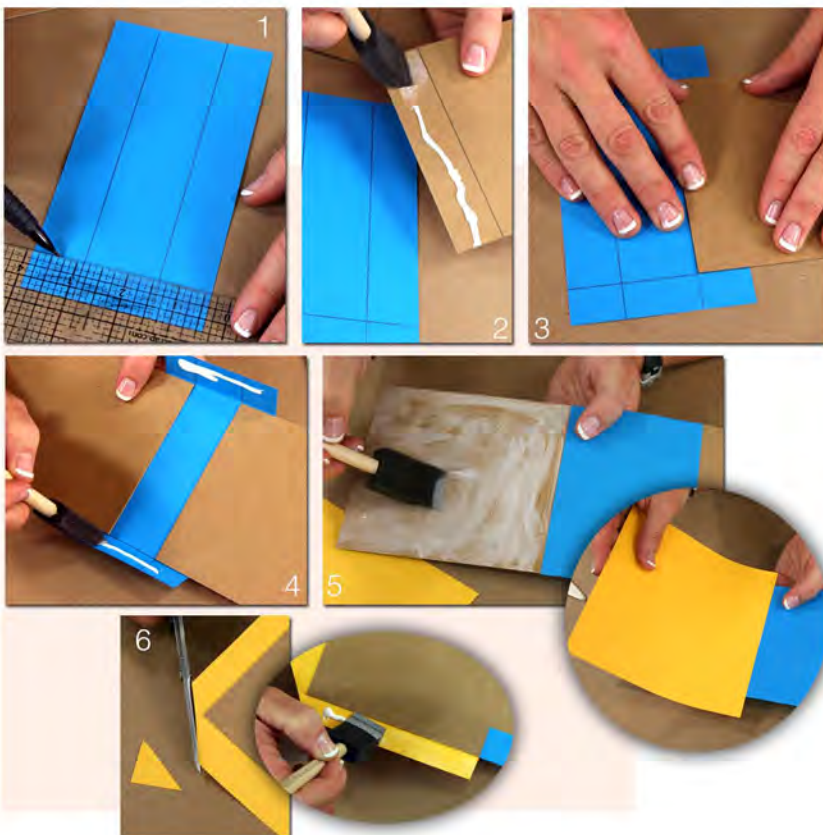
With gift giving season upon us, there's no better time to unveil this fun project designed by Terri Zwicker! It holds a set of eight notecards in an adorable bi-fold case. The project can be duplicated with more papers and envelopes from your stash.

#### Project Kit:

- (2) 4.75x6.25" Matte Board Covers
- 3.5x6.5" Turquoise Outside Spine Cover
- (2) 6.25x6.25" Yellow Outside Cover Wraps
- 3.5x4.25" Turquoise Inside Spine
- (2) 9.75x12" Navy Pockets
- (2) 3.5x5.5" Orange Decorative Flaps
- (4) 5x7" Red Card Bases
- (4) 5x7" Turquoise Card Bases
- (8) 3x4.5" White Card Panels
- (8) White Envelopes
- 8.5x11" White Printed Cutapart
- (2) Low Tack Hook and Loop Dots

#### Tools and Materials:

- Grid Ruler
- Pencil
- Foam Brush
- Bookbinding Glue
- Bone Folder
- Scissors
- Score-Pal®
- Craft Knife
- Cutting Mat
- Envelope Punch Board®



**1. Place** the 3.5x6.5" Turquoise Outside Spine Cover vertically on your work surface. Use a pencil and grid ruler to draw a guideline 1" from the left and right edges and .75" from the bottom edge.

**2. Draw** a guideline 1" from one short edge of each 4.75x6.25" Matte Board Cover. Brush bookbinding glue within the 1" marked area on one of the boards.

**3. Place** the glued area of the board onto the spine cover, aligning the corner of the board with the intersecting pencil lines. Repeat for the second board.

**4. Fold** the top and bottom spine flaps around the boards and glue into place.

**5. Flip** the project over. Brush glue onto the exposed matte boards and attach the 6.25x6.25" Yellow Outside Covers to the glued areas.

**6. Use** a scissors to remove the paper from each corner at a 45 degree angle. Glue the long flaps around the boards.

7. **Tuck** in the excess paper that extends beyond the tip of each corner and glue the short flaps into place.

8. **Brush** glue onto the 3.5x4.25" Turquoise Inside Spine and center from top to bottom on the inside spine of the book cover. Use a bone folder to burnish the two spine covers together and to shape a slightly curved spine.

9. **Score** the 9.75x12" Navy Pockets vertically at 1.5, 2, 7.75 and 8.25". Score horizontally at 3, 3.5, 7.75 and 8.25".

10. **Score** each 5x7" Red and Turquoise Card Base horizontally at 3.5". Fold each piece in half to make a card base.

11. **Use** a ruler, cutting mat and craft knife to remove the outside scored areas on each Navy Pocket.

12. **Punch** the 9.75" edge of each Navy Pocket at 4.875" to add a thumb hole to easily access the cards inside the envelope.

13. **Use** the reverse side of the punch to round the top flap corners of the envelope holders.

14. **Fold** along scorelines and glue side flaps around to the back.

15. **Use** the flat side of a grid ruler to burnish the flaps to the back of the holder while maintaining the box shape.

16. **Use** a craft knife and cutting mat to trim apart the 8.5x11" sheet of White Printed Cutaparts into sections as indicated by the crop marks.

17. **Trim** two 1.5" strips from the long narrow strip. Fold in half and glue to the center of the Navy flaps to form a pull tab.

18. **Round** two corners of the 3.5x5.5" Orange Decorative Flaps. Nest onto the outside flaps of the Navy Pockets.

19. **Remove** the backing from one piece of the hook and loop dots. Place onto the inside flap. Remove the backing from the other piece and close the flap. Repeat for the other pocket flap.

20. **Brush** glue onto the back of each Navy pocket and attach to the inside covers.

21. **Nest** the decorative panels onto the White panels and Red and Turquoise cards. There will be two cards without decorative panels. Stamp as desired. Insert four cards and envelopes into each pocket.

22. **Decorate** the envelope flaps with the remaining cutaparts.

