

CLUB

Stamp

EQUESTRIAN



Saddle Bag Project

by the CS® Design Team

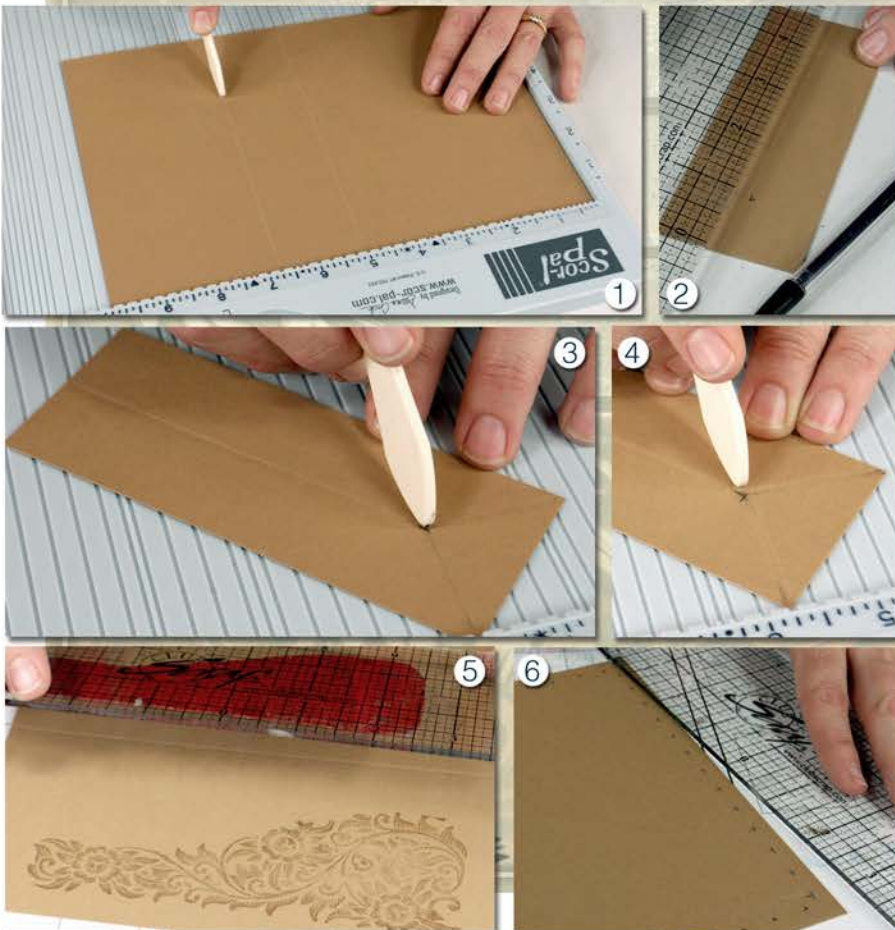
When we found the stunning suede paper featured in this project, we simply had to have it! The durability and texture of the unique paper is just perfect for embossing, stitching, scoring, stamping, fringing and more. You can pick up additional 8.5x11" sheets in the GHM! Dept. while they last!

Project Kit:

5x7" Suede Front Wall	(3) 4.75x6.25 Dark Brown Inside Book Pages
(2) 2x5" Suede Side Walls	(2) Nickel D-Rings
2x7" Suede Bottom Wall	(4) Star-Shaped Nail Heads
7x10" Suede Back Wall	Silver Concho Closure
.5x12" Embellishment Strip	(4) Yards Brown Waxed Lacing Cord
(2) .5x4" Suede D-Ring Holders	(3) Silver Binder Rings
(2) 4.75x6.25" Suede Book Covers	24" Saddle Stitched Ribbon
(3) 4.75x6.25" Ivory Inside Pages	
(3) 4.75x6.25" Green Inside Pages	
(3) 4.75x6.25" Lt Brown Inside Pages	

Tools and Materials:

CS® Grid Ruler
Pencil
Paper Piercing Tool and Cork Board
Scissors
Crop-A-Dile® or Japanese Screw Punch
Bone Folder
Patience
Optional Supplies: Corner Rounder, CS® Bookbinding Glue, and Scor-Pal®



1. **Score** the 7x10" Suede Back Wall horizontally at 5 and 6.75".

2. **Place** a 2x5" Suede Side Wall vertically on your work surface. Measure and mark the center, 1" up from the bottom edge. Repeat for the second wall.

3. **Score** each 2x5" Side Wall vertically at 1". Score from the bottom left and right corners to the marked location to prepare a gusset fold.

4. **Place** the 2x7" Suede Bottom Wall vertically on your work surface. Measure and mark the center, 1" from the bottom and top edges. Create angled scorelines from the outside corners to the marked locations, as before.

5. **Stamp** the Suede Back and Front Walls and any other suede components prior to the next step, if desired.

6. **Measure** 1/4" from the outside edge of the 7x10" Suede Back Wall. Make a mark every half inch around the entire perimeter.

7. Stack the 5x7" Suede Front Wall behind the 5x7" scored area of the back wall. Punch a hole through both layers at each marked location. Continue punching around the entire back wall.

8. Use the punched holes in the back wall to transfer the hole locations to the 2x7" Suede Bottom Wall and (2) 2x5" Suede Side Walls. The side walls can be layered and punched at the same time. Do not punch the top edge of the side walls. Punch the corners of the purse flap at this time.

9. Fashion the bottom and side walls into gussets. The paper is very strong and will cooperate nicely. Use a bone folder to make crisp, burnished folds on the scorelines of the back wall.

10. Use a scissors to cut about 1" of "fringe" into each each of the .5x4" strips. Fold the strips in half. (Isn't that cute?)

11. Thread the fringed paper through the D-ring, covering the seam of the ring. Place the D-ring onto the top unpunched edge of a 2x5" side wall.

12. Press the prongs of the star-shaped nailhead onto an ink pad. Mark the folded strap hinge with the inked prongs. Pierce at each marked location, push the prongs through the holes and press down on the back of the side wall. (The prongs are short, so there will be minimal prongs on the back of your project. Be sure to push hard through all three layers.)

13. Repeat for the second side wall.

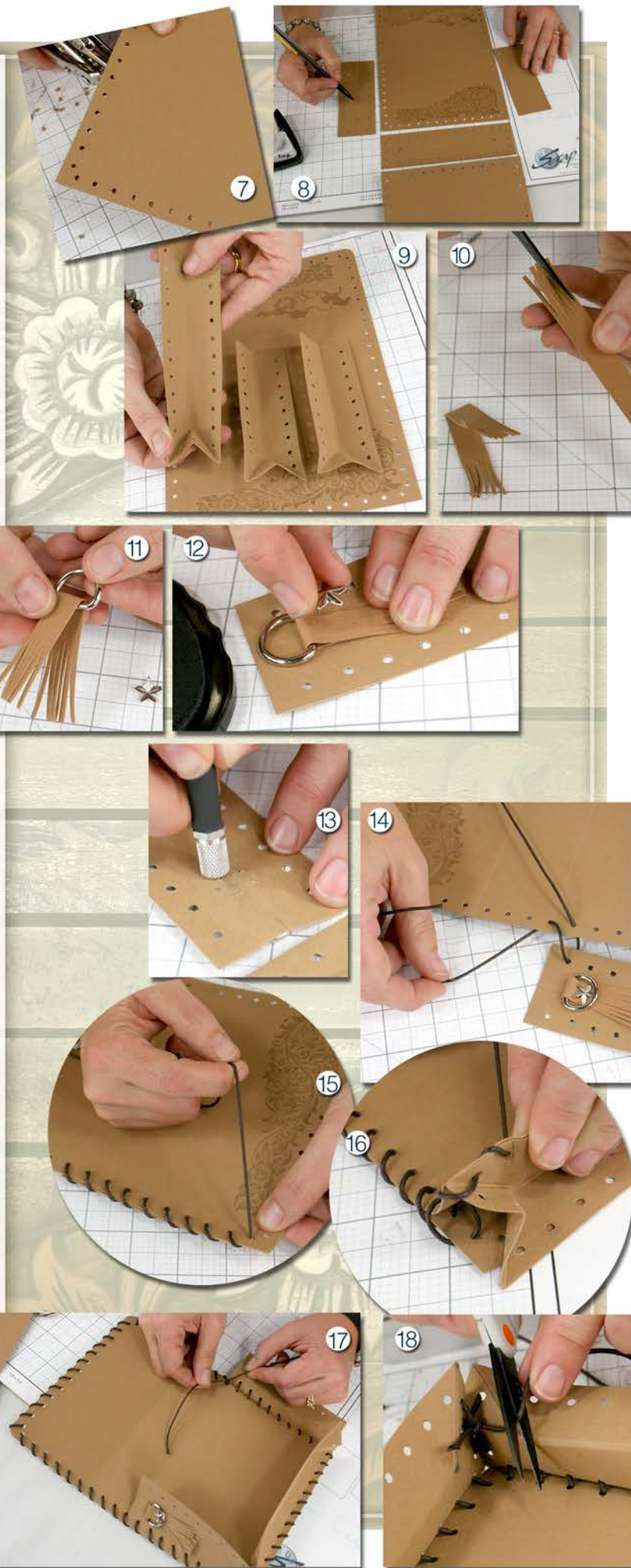
14. Enter the hole at the 5" scoreline on the back wall with the lacing cord. Leave a tail about 3" long, and tape to the inside of the wall to temporarily secure. Line up the side wall and stitch through the top hole and into the back wall.

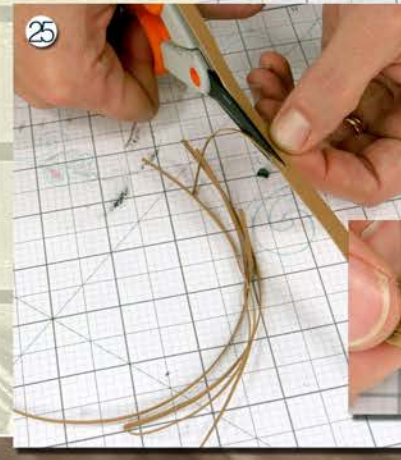
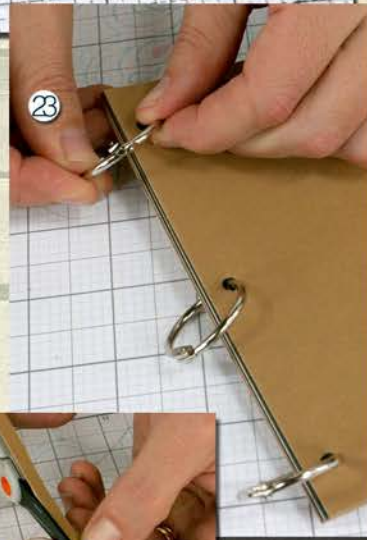
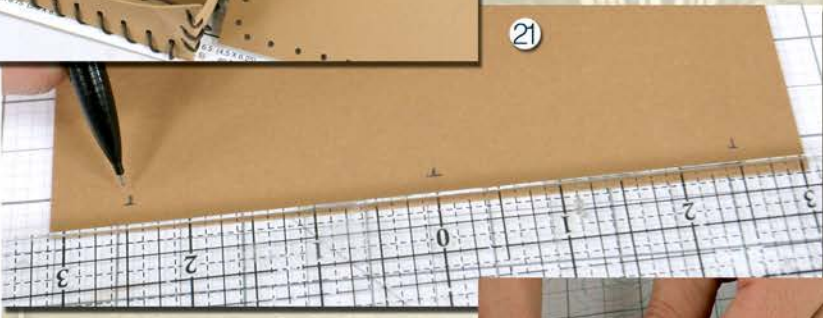
15. Stitch in and out until the entire side wall is attached.

16. When reaching the base, stitch around the corner and through the first hole in the 2x7" bottom wall. Continue to the other corner and add the second side wall.

17. After stitching around the top flap of the purse, tie a knot in the cord with the thread tail and trim the end. If desired, secure the knot with a dab of bookbinding glue and allow it to dry.

18. Add the stitches to the bottom three holes of each side wall to connect to the base. Tie thread tails into a know and trim ends.





19. To attach the front wall, stitch through the first hole of side and front wall; tie thread tails into a knot.

20. Exit the side wall hole a second time, and then continue stitching around the entire front wall until reaching the other side. Make a knot to secure the cord and trim ends.

21. Sort the 4.25x6.75" Inside pages into a desired order and sandwich between the Suede covers.

22. Measure .25" from the long edge of one inside page. Mark the center and 2.5" left and right of center. Punch holes into the marked locations. Transfer holes through all remaining inside pages, using the first page as a template.

23. Thread the binder rings through the holes and decorate as desired.

24. Loop ribbon around the D-ring and attach the end with a star-shaped nail head. Adjust the length of ribbon to suit your desire and attach the end to the other D-ring.

25. Use a scissors to cut extremely narrow strips from the .5x12" piece of suede.

26. Make a loop and push through the holes of the heart-shaped concho. Bring the ends of the strips through the loop.

27. Tie beads onto the fringe and attach the concho to the purse flap with your favorite adhesive. Insert the mini book into the purse and take to the nearest rodeo!

