



Serenity

Shutter Box Project

by Kay Williamson of Club Scrap®

There is no end to what Kay can do with book board and paper! We're fascinated by the interactive nature of this unique project. Open the double doors to find a set of five pages that swivel on wood dowels. We'll help you assemble the project step by step, 'cuz that's what we do!

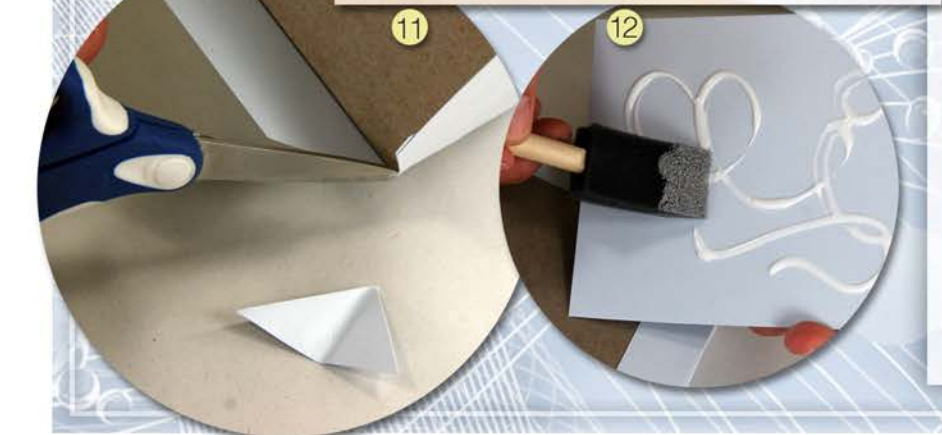
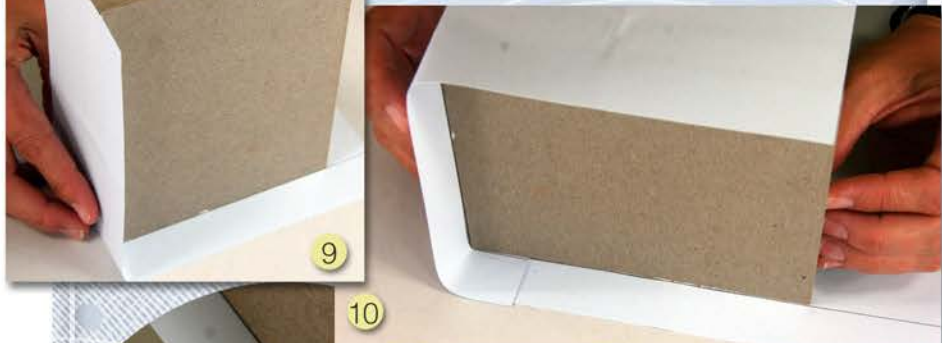
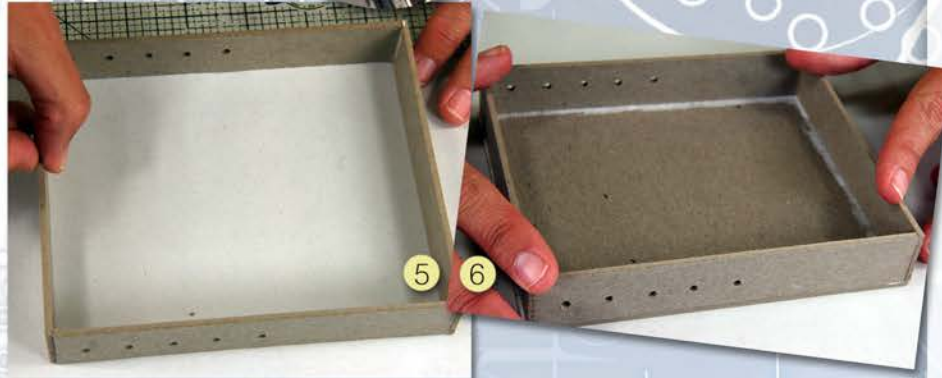
Project Kit:

- (2) 1x5" Book Board Vertical Walls
- (2) 1x5.75" Book Board Horizontal Walls
- 5x6" Book Board Back Wall
- (2) 3x4.875" Book Board Doors
- (2) 1.625x6.75" Book Board Base and Top
- (5) 3.25x4.5" Blue Pattern Inside Pages
- (2) 3.5x12" Light Blue Outside Frame Wrap
- (2) 4.75x5.75" Light Blue Front and Back Covers
- (2) 3.625x8.5" Dark Gray Base and Lid Wraps
- (2) 3x7" Dark Blue Outside Door Covers
- (2) 2.75x4.625" Light Blue Inside Door Covers
- (2) 2.25x4.625" Dark Gray Door Hinge Wraps
- (2) Beads
- 12" Waxed Linen Thread
- (4) 1/8x12 Wood Dowels

Tools and Materials:

- CS® Bookbinding Glue
- CS® Grid Ruler
- Foam Brush
- Pencil
- Scissors
- Bone Folder
- Paper Piercing Tool
- Crop-A-Dile™





1. **Identify** one 1x5.75" Horizontal Wall. Use a grid ruler and pencil to measure and mark five locations 1/2" from the bottom edge at 3/8", 1", 1-5/8", 2-1/4" and 2-7/8".
2. **Punch** holes at the marked locations with a Crop-A-Dile™.
3. **Layer** the punched horizontal wall on top of the second horizontal wall, and transfer the location of the holes onto the piece. Punch.
4. **Brush** CS® Bookbinding Glue onto the face edge of one 1x5" Vertical Wall. Attach the horizontal walls to form two corners of the frame.
5. **Glue** the fore edge of the second vertical wall and attach to the horizontal walls to complete the rectangular frame.
6. **Brush** glue onto the top outside edge of the 5x6" Back Wall. Place the frame onto the back wall and align edges.
7. **Use** a grid ruler and pencil to mark a guideline 1" from the long edge of each 3.5x12" Light Blue Outside Frame Wrap.
8. **Brush** glue onto one horizontal wall of the frame and place it onto the wrap with the corner aligned with the edge of the paper and the back wall resting on the pencil guideline.
9. **Brush** glue onto the outside of the adjacent vertical wall and attach to the wrap, continuing to align with the pencil guide. Glue enough of the third wall to attach the short tab of the wrap.
10. **Glue** the second wrap in the same manner, placing the edge of the paper at the corner of the frame, overlapping with the short tab you've just glued into place. Continue gluing one wall at a time until the second wrap is fully attached. Crease the paper at all four corners.
11. **Trim** a "v" from the paper at each corner on the back of the frame. Glue the four flaps and burnish with a bone folder.
12. **Brush** glue onto one 4.75x5.75" Light Blue Cover and center onto the back wall.

13. Use a paper piercing tool to transfer the location of the punched holes in the frame through the outer wrap.

14. Cut along the folds in the corners of the outside wrap until you reach the top edge of the frame. Fold the vertical flaps down into the box, forcing the paper into the corners and around the top edge of the frame. Remove the flaps and repeat with the horizontal flaps.

15. Brush glue onto the vertical paper flaps. The paper will soften as it is moistened by the glue and will become more pliable as you attach the flaps to the frame. Repeat with the horizontal flaps.

16. Transfer the location of the punched holes in the horizontal walls through the wrap. Ream the holes as large as possible with a tip of a pencil or bone folder.

17. Glue the 4.75x5.75" Light Blue Cover to the inside of the frame. You may need to trim a small amount of paper from the outside edges of the cover, depending on the space that remains as a result of the wrapping.

18. Measure, mark, and cut five 5" pieces from the wood dowels. Trim two pieces to 5-3/8" and set aside.

19. Score each 3.25x4.5" Blue Pattern Inside Page vertically at 1/2". Stamp the pages with unmounted images.

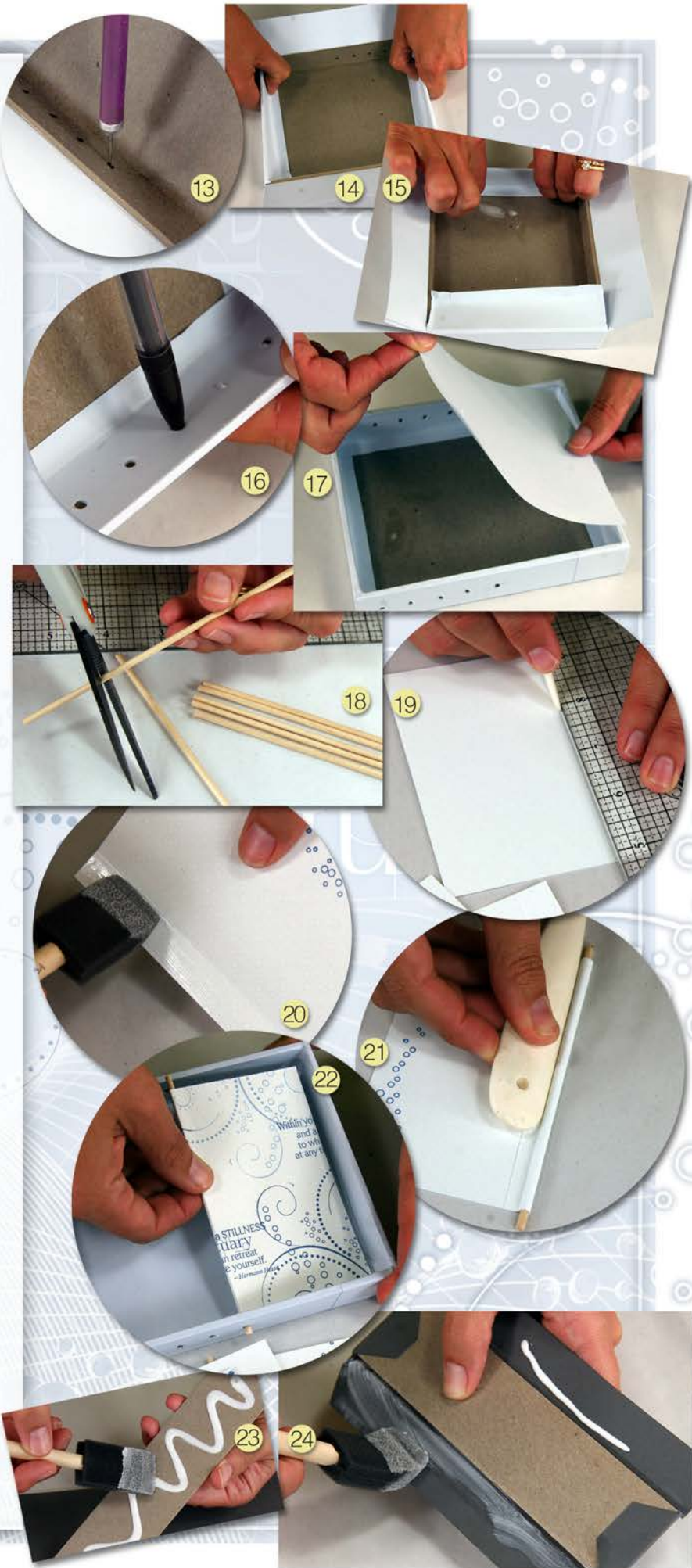
20. Fold along the score line on one inside page and brush glue onto the scored flap.

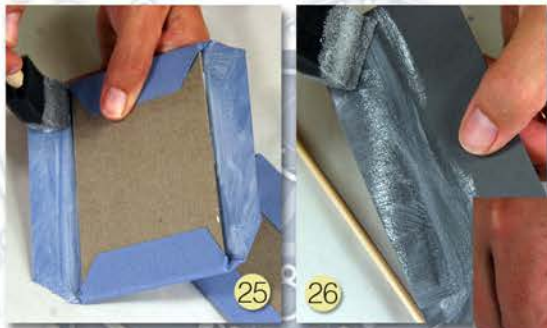
21. Center one 5" dowel into the scored crease, fold the paper around the dowel, and press into place with the edge of a bone folder. Repeat with the four remaining pages and dowels.

22. Starting with the last page first, insert the dowels into the pairs of punched holes in the frame. Slide the dowel completely through one hole in order to fit. You may need to ream the holes larger if the dowel doesn't slide easily into the hole.

23. Glue the 1.625x6.75" Book Board Base and Top to the center of the 3.625x8.5" Dark Gray Base and Lid Wraps.

24. Trim each corner at 45 degrees to create four flaps. Secure the flaps onto the boards.





25



26



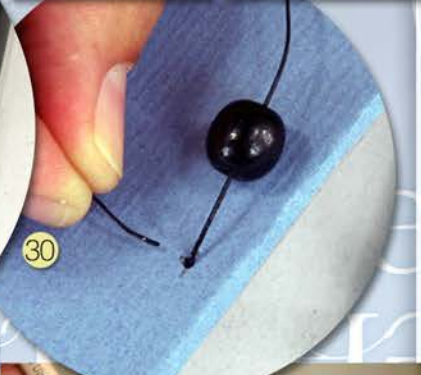
27



28



29



30



31



32



33

25. Repeat wrapping process for the 3x4.875" Book Board Doors and 3x7" Dark Blue Outside Door Covers.

26. Fold each 2.25x4.625" Dark Gray Door Hinge Wrap vertically in half. Brush glue onto one half of the wrap.

27. Center one 5-3/8" wood dowel into the fold and press the paper together with a bone folder. Repeat for the second hinge.

28. Brush glue onto one side of the hinges and attach to the edges of the doors. Be sure that the dowel is directly next to the edge of the door and center the hinge paper from top to bottom.

29. Use a ruler and paper piercing tool to pierce a stitching hole in the center of the inner edge of each door, 1/4" from the edge.

30. Trim the waxed linen thread in half. Sew the beads onto the doors to create a handle. Tie the thread tails on the back and trim ends.

31. Glue the 2.75x4.625" Light Blue Inside Door Covers to the back of the doors.

32. Place the frame on your work surface and rest the doors on top. Center the book board top against the top edge of the frame, flush with the back wall. Mark the contact point of the wood dowel with a pencil. Punch a hole at each mark with a Crop-A-Dile™. Place the lid onto the base and use as a template to mark the location of the holes; punch.

33. Glue the base to the bottom of the frame, insert the hinge dowels into the base, and attach the top with a generous amount of bookbinding glue. Exercise the inner page dowels to avoid trapping them in place with wet glue.

Once you've completed your project, decorate the pages, frame and doors to heart's content!

Visit the GHM! Dept. and pick up a few extra "Nekkid Kits" that include the book board components and wood dowels. Incorporate papers and door handles from your stash to make more shutter boxes.

