

CLUB Stamp Wisteria

Card Cache Project

by Kay Williamson of Club Scrap®

Your new card cache is both practical and beautiful! Store cards and envelopes up to 5x7" in the handy inner box and stash it neatly on a shelf. Plan for upcoming special occasions and have your greetings ready to send, store special cards you've received from creative friends, or pass it along loaded with your handmade creations.



Project Kit, Boards:

- (2) 4x5.5" Front and Back Box Walls
- (2) 2x4" Side Box Walls
- 2x5.625" Box Base
- 2.25x7.5" Spine
- (2) 5.75x7.5" Covers

Project Kit, Paper Components:

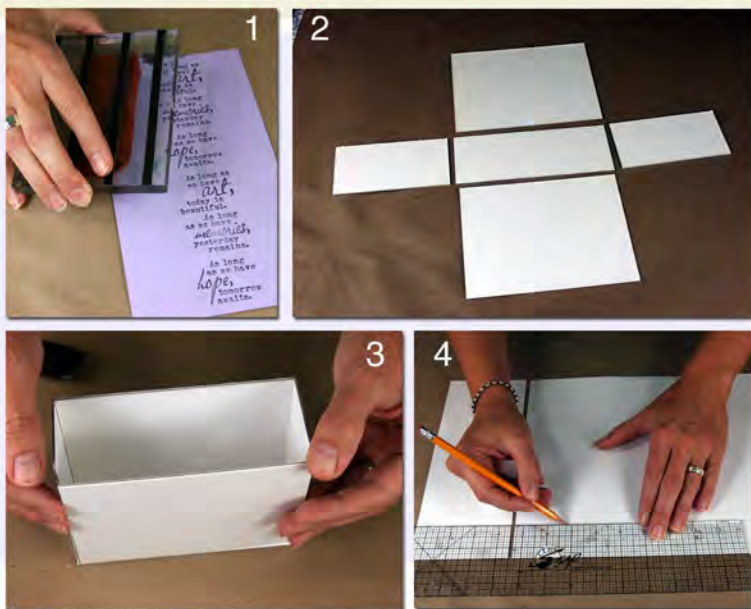
- 10.25x12" Printed Inside Box Wrap
- 4x10.25" Printed Inside Box Wrap
- 9.5x11" Dark Purple Outside Back Cover/Spine Wrap
- 5.25x9.5" Light Purple Outside Front Cover Wrap
- (2) 7x7.25" Light Purple Inside Front/Back Cover Wraps
- 1.75x11" Light Purple Support Strap

Project Kit, Other:

- Metal Handle
- (2) 3/8" Brass Brads

Tools and Materials:

- Foam Brush
- CS® Bookbinding Glue
- CS® Grid Ruler
- Scissors
- Pencil
- Bone Folder
- Paper Piercing Tool
- Crop-A-Dile®
- Wisteria UM Stamps (Optional)
- CS® Amethyst Ink (Optional)



Make Inner Box

1. **Stamp** the outside of the 5.25x9.5" Light Purple Outside Front Cover Wrap with UM Wisteria images and Amethyst ink.
2. **Arrange** the Box Walls and Base on your work surface.
3. **Use** CS Bookbinding Glue to attach the back wall, side walls and front wall to the top edge of the base.
4. **Place** the 10.25x12" and 4x10.25" Printed Inside Box Wraps plain side up on your work surface with the 10.25" edges aligned. Mark a guideline 1.5" from the bottom edge of each piece.



5. Mark a vertical guideline 1" from the left edge of the 4x10.25" piece.

6. Temporarily place the back wall of the box onto the 4x10.25" wrap, aligning the bottom corner of the box within the intersecting pencil lines. Mark the location of the edge of the paper wrap onto the box. Apply glue within the marked area of the box, and attach to the same location on the wrap. Burnish.

7. Brush glue onto the remaining exposed book board on the back wall.

8. Place the 10.25x12" Inside Box Wrap directly next to the existing wrap, aligning the bottom edges. Burnish.

9. Glue the 1" flap to the side wall.

10. Working one wall at a time, continue gluing the wrap onto the outside of the box, always applying glue to the box.

11. When reaching the final paper flap, brush glue onto the paper and attach.

12. Use a scissors to cut a "v" into each corner of the paper flaps at the bottom of the box.

13. Glue the four paper flaps into place.

14. Use the edge of the ruler to square off the paper flaps extending beyond the top edge of the box. Cut along each squared corner until reaching the top of the box.

15. Working one at a time, brush glue onto each flap and wrap down into the box. Burnish with a bone folder.



Make Outer Cover

1. Temporarily place the handle onto the upper center of the 2.25x7.5" Spine. Use a pencil to mark the location of the mounting holes onto the spine. Punch a 1/8" hole at each marked location with a Crop-A-Dile®.

2. Place the 9.5x11" Dark Purple Outside Back Cover/Spine Wrap and 5.25x9.5" Light Purple Outside Front Cover Wrap on your work surface. Be certain that the stamped artwork on the Light Purple cover is positioned correctly.

3. Mark a guideline 1" from the bottom edges of the wraps and 1" from the right edge.

4. Brush glue onto one 5.75x7.5" Cover and place onto the wrap with the corner of the cover aligned with the intersecting guidelines.



5. Glue the 2.25x7.5" Spine next to the cover, leaving a .25" gutter between the two pieces. Position the pre-punched holes at the top, and use the grid ruler to help align edges.

6. Mark a guideline 1-3/8" from one long edge of the remaining 5.75x7.5" Cover. Brush glue within the marked area and attach to the wrap with a .25" gutter between the cover and spine.

7. Apply glue to the remaining exposed book board and attach the Light Purple outside front cover.

8. Trim the paper from each outside corner at a 45 degree angle, leaving at least 1/8" of paper extending beyond the tip of each corner.

9. Pre-fold the paper flaps around the boards. Glue the long flaps into place. Use the tip of a bone folder to tuck in the excess paper extending past the edge of each corner, and glue the short flaps.

10. Pierce through the cover wrap to mark the location of the punched holes in the spine. Attach the hardware to the outside cover with the brads.

11. Temporarily place the 7x7.25" Light Purple Inside Cover Wraps onto the cover. Ensure that the papers are positioned vertically and fit properly. (The papers are almost square, so it is important to use caution.) Glue the covers in place with equal margin around the outside edges; burnish. Gently press the paper into the spine gutter and exercise the hinge.

12. Brush glue onto the side wall of the box and attach to the spine with the bottom of the box flush with the bottom of the cover.

13. Apply glue to the 1.75x11" Light Purple Support Strap. Align the edge of the strap with the top edge of the spine inside cover paper. Burnish the strap onto the spine and down into the box. Load the finished box with cards and envelopes.

