



Assembly Line Scrapbooking

2014 Special Edition I'll Be Gnome for Christmas

Materials:

- *I'll Be Gnome for Christmas* Collection

Tools and Supplies:

- 12" Paper Trimmer
- Adhesive
- Tape
- 3x14" CS® Grid Ruler
- Scissors

Measurement Conversions:

- .125 = $\frac{1}{8}$ "
- .25 = $\frac{1}{4}$ "
- .375 = $\frac{3}{8}$ "
- .5 = $\frac{1}{2}$ "
- .625 = $\frac{5}{8}$ "
- .75 = $\frac{3}{4}$ "
- .875 = $\frac{7}{8}$ "

LB = Left Base Page

RB = Right Base Page

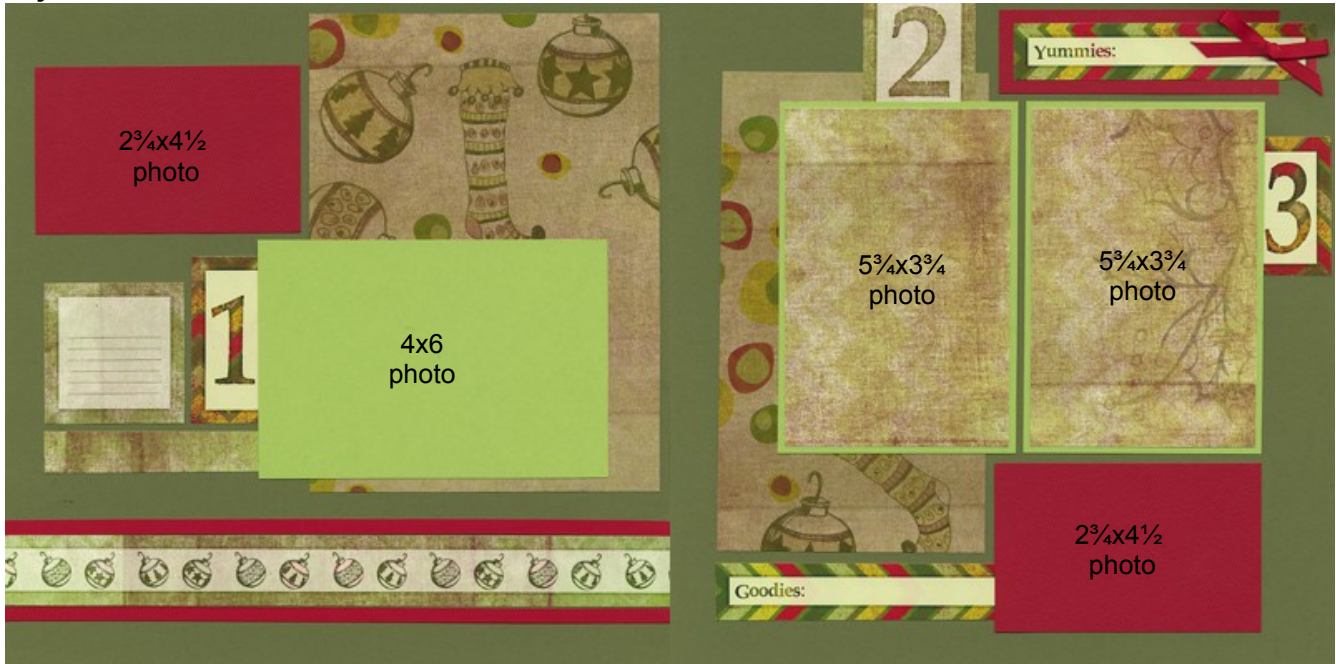
Preparation:

Trim the Celery and Ivory Printed Cutaparts into sections as indicated by the artwork.

If you do not have an item to complete the layout as shown, simply omit or substitute the item.



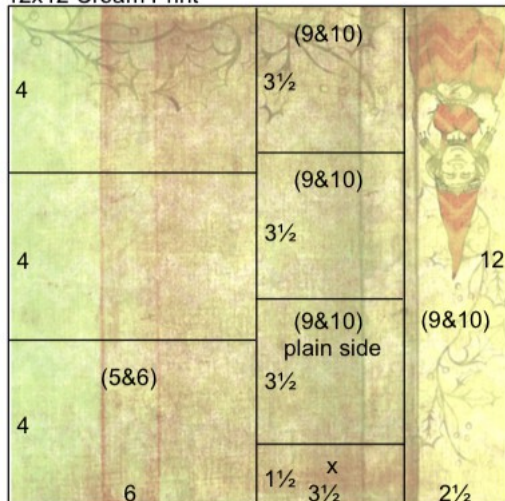
Layout 1 & 2



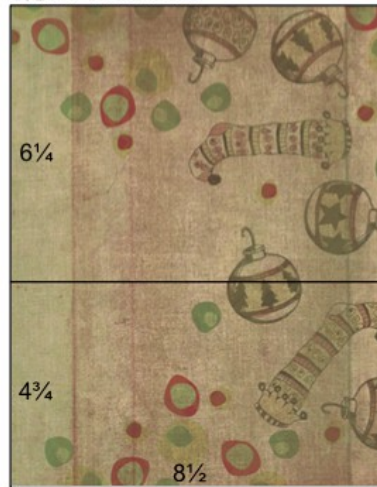
- (2) 12x12 Dark Green Plains (LB & RB)
- 12x12 Cream Print
- 8.5x11 Kraft Print
- 8.5x11 Red Plain
- (3) 4.25x6.25 Light Green Photo Mattes
- Ivory Cutaparts
- Celery Cutaparts
- Red Grosgrain Ribbon

1. Place the 12x12 Cream Print upside down into the trimmer; cut at 9.5 and 6". Trim the 6x12 horizontally at 8 and 4". Cut the 3.5x12 horizontally at 10.5, 7 and 3.5".
2. Place the 8.5x11 Kraft Print horizontally into the trimmer with the images at the top; trim at 6.25".
3. Trim the 8.5x11 Red Plain horizontally at 6". Cut the 6x8.5 horizontally at 4.75". Trim the 4.75x6 horizontally at 3". Cut the 5x8.5 horizontally at 7 and 3.5".

12x12 Cream Print



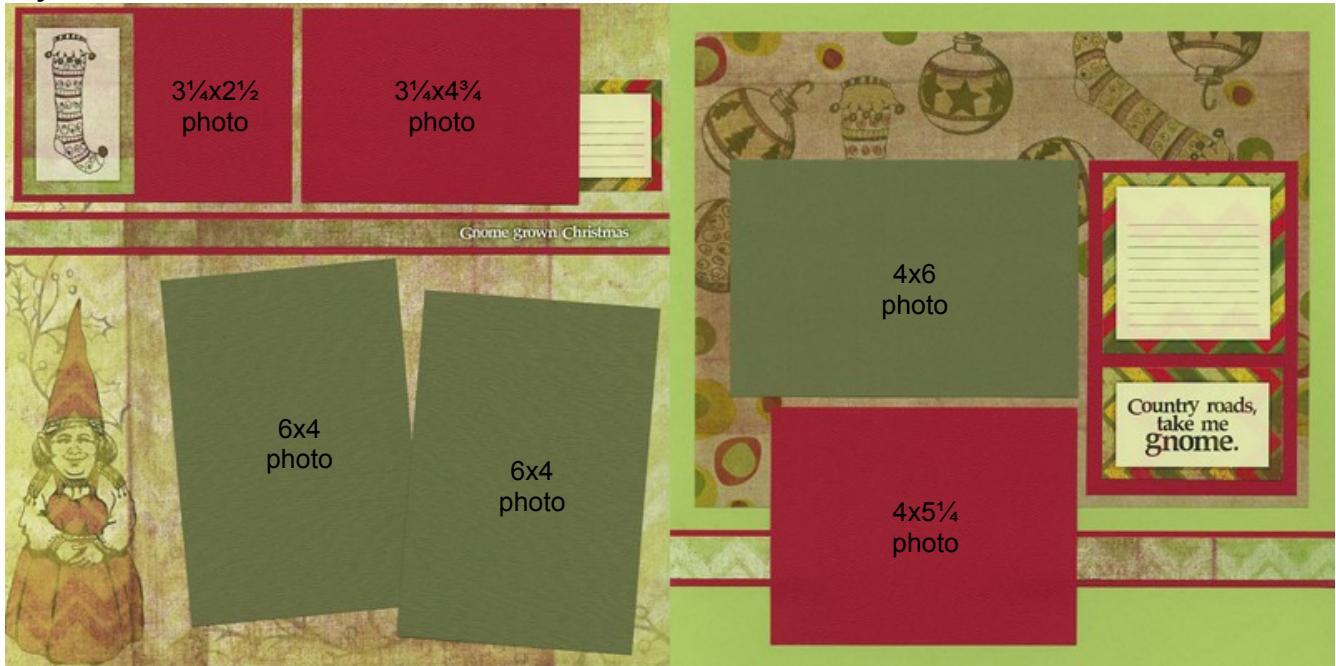
8 1/2 x 11 Kraft Print



8 1/2 x 11 Red Plain



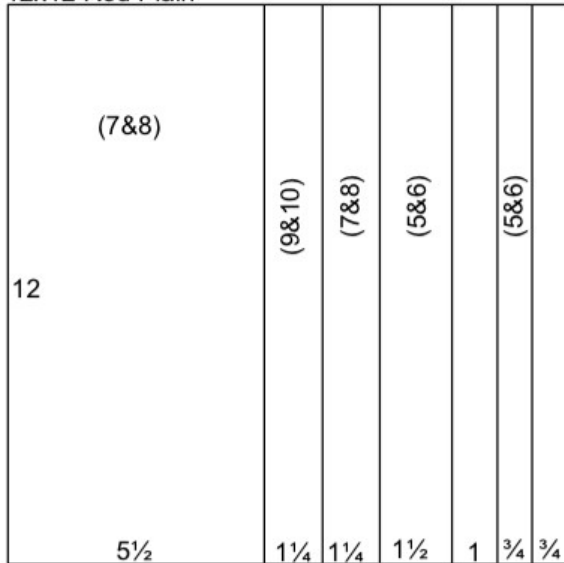
Layout 3 & 4



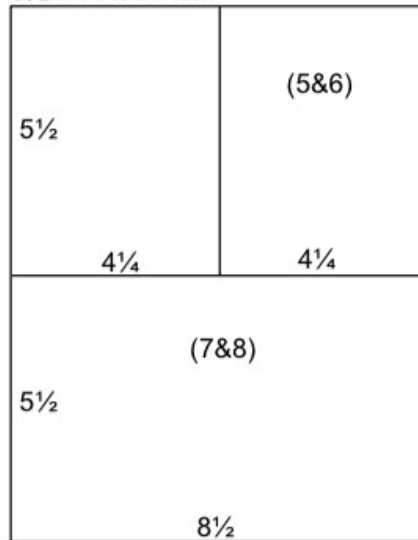
- 12x12 Ivory Print (LB)
- 12x12 Light Green Plain (RB)
- 12x12 Red Plain
- 8.5x11 Kraft Print
- 8.5x11 Red Plain
- 3.75x6 Red Plain (From 1&2)
- (2) 3.5x5 Red Plains (From 1&2)
- (3) 4.25x6.25 Dark Green Photo Mattes
- Ivory Cutaparts
- Celery Cutaparts

1. Trim the 12x12 Red Plain at 11.25, 10.5, 9.5, 8, 6.75, and 5.5".
2. Cut the 8.5x11 Red Plain horizontally at 5.5". Trim one 5.5x8.5 horizontally at 4.25".

12x12 Red Plain



8 1/2 x 11 Red Plain

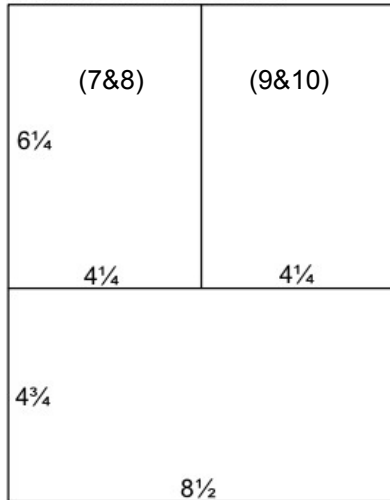


Layout 5 & 6



- (2) 12x12 Kraft Prints (LB & RB)
 - (2) 8.5x11 Dark Green Plains
 - 4x6 Cream Print (From 1&2)
 - .75x12 Red Plain (From 3&4)
 - 1.5x12 Red Plain (From 3&4)
 - 4.25x5.5 Red Plain (From 3&4)
 - (3) 4.25x6.25 Red Photo Mattes
 - Ivory Cutaparts
 - Celery Cutaparts
 - Ivory Satin Ribbon
1. Trim one 8.5x11 Dark Green Plain horizontally at 6.25". Cut the 6.25x8.5 horizontally at 4.25".

8 1/2 x 11 Dark Green Plain



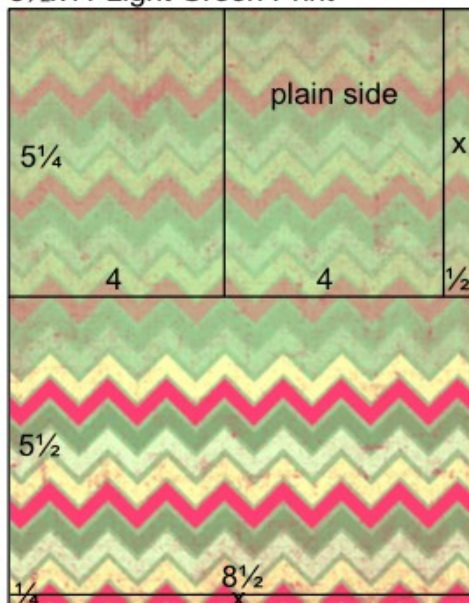
Layout 7 & 8



- (2) 12x12 Celery Prints (LB & RB)
- 8.5x11 Light Green Print
- 1.25x12 Red Plain (From 3&4)
- 5.5x12 Red Plain (From 3&4)
- 5.5x8.5 Red Plain (From 3&4)
- 4.25x6.25 Dark Green Plain (From 5&6)
- 4.25x6.25 Celery Photo Matte
- Ivory Cutaparts
- Celery Cutapart
- Checked Ribbon

1. Place the 8.5x11 Light Green Print horizontally into the trimmer with the bold pattern on the right; trim at 10.75 and 5.25". Trim the 5.25x8.5 horizontally at 8 and 4".

8 1/2 x 11 Light Green Print



Layout 9 & 10



- 12x12 Red Plain (LB)
 - 12x12 Light Green Plain (RB)
 - 8.5x11 Light Green Print
 - (3) 3.5x3.5 Cream Prints (From 1&2)
 - 2.5x12 Cream Print (From 1&2)
 - 1.25x12 Red Plain (From 3&4)
 - 4.25x6.25 Dark Green Plain (From 5&6)
 - (2) 4.25x6.25 Celery Photo Mattes
 - Ivory Cutaparts
 - Celery Cutaparts
 - Red Grosgrain Ribbon
 - Ivory Satin Ribbon
1. No trimming required for this layout.

